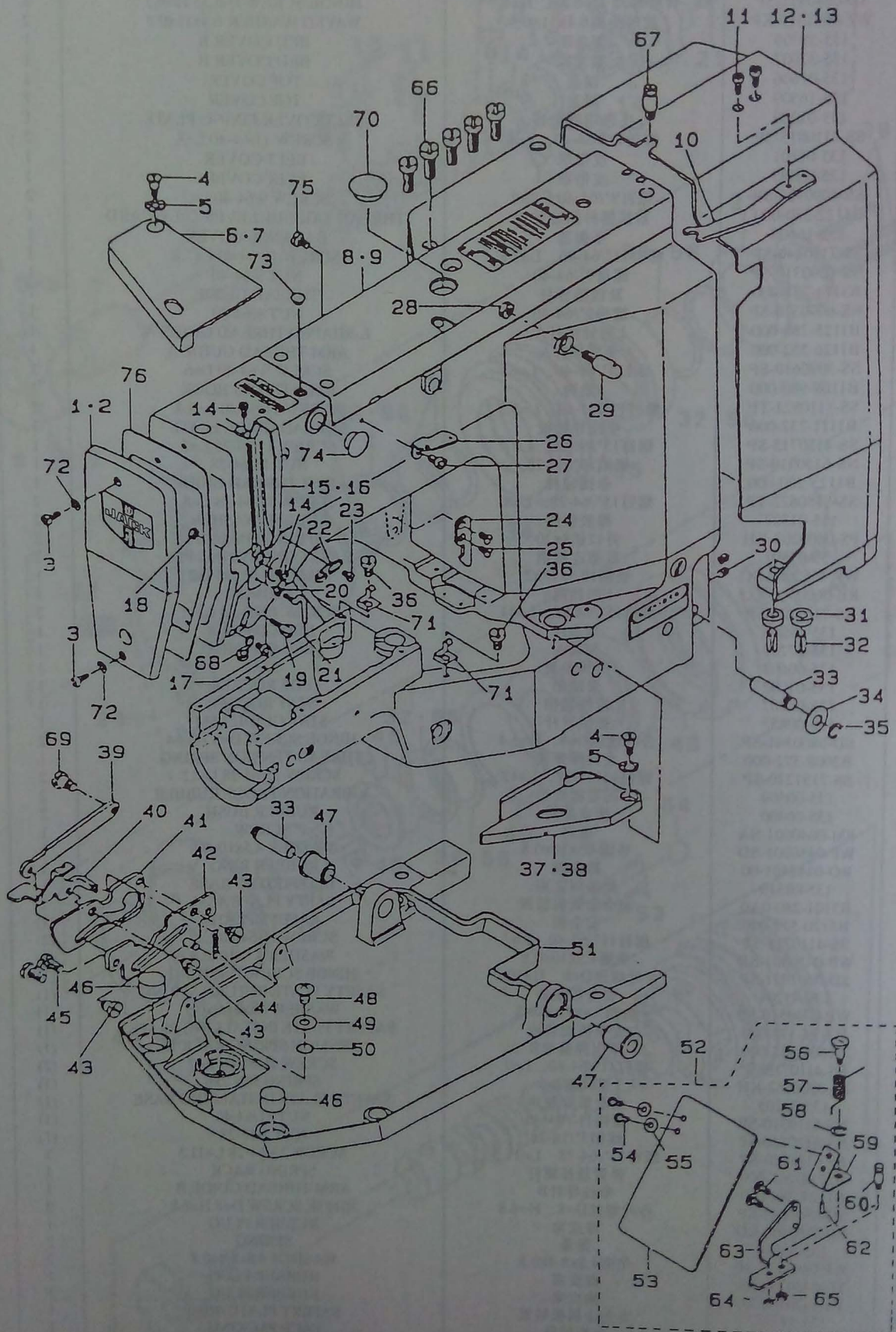


# 1. 机头框架结构 / FRAME & MISCELLANEOUS COVER COMPONENTS

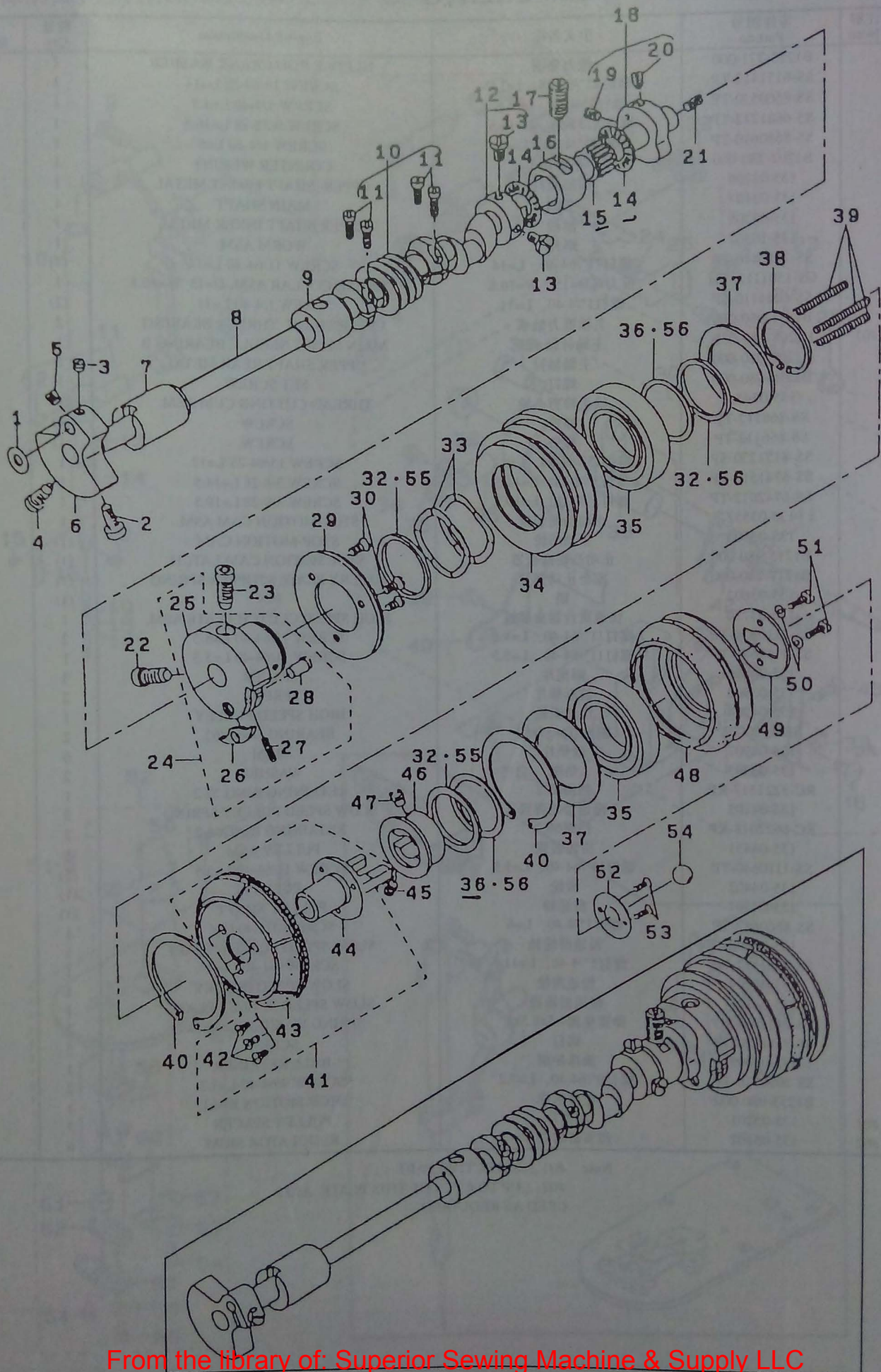


# 1. 机头框架结构 / FRAME & MISCELLANEOUS COMPONENTS

序号 Ref.no	注解 Note	零件图号 Part.no	中文名称	English Description	数量 Qty	备注 Remark
1-1		135-39457	面板	FACE PLATE ASM	1	
1-2	#01	135-38152	面板	FACE PLATE ASM	1	
1-3		SS-4111015-SP	螺钉11"/64-40, L=10	SCREW 11/64-40 L=10	2	
1-4		SD-0640471-SP	合叶螺丝 D=6.35, H=4.7	HINGE SCREW D=6.35 H=4.7	2	
1-5		WZ-0641510-KP	波形垫圈6.4x11x0.3	WAVED WASHER 6.4x11x0.3	2	
1-6		135-39309	架盖B	BED COVER B	1	
1-7	#01	135-37907	架盖B	BED COVER B	1	
1-8		135-01606	顶盖	TOP COVER	1	
1-9		138-16509	顶盖	TOP COVER	1	
1-10		135-01200	皮带罩固定板	BELT COVER FIXING PLATE	1	
1-11		SS-4110815-SP	螺丝11"/64-40, L=8	SCREW 11/64-40 L=8	2	
1-12		135-01101	皮带罩	BELT COVER	1	
1-13	#01	135-05805	皮带罩	BELT COVER	1	
1-14		SS-4090715-SP	螺钉9"/64-40, L=7	SCREW 9/64-40 L=7	2	
1-15		B1122-280-000	紧线器杆防油装置	THREAD TAKE-UP LEVER OIL GUARD	1	
1-16		138-16608	平衡器	BALANCE COVER	1	
1-17	#01	SS-7110840-SP	螺钉11"/64-40, L=7.8	SCREW 11/64-40 L=7.8	1	
1-18		NS-6090310-SP	螺母9"/64-40	NUT 9/64-40	1	
1-19		B3114-771-000	紧线器导杆	THREAD GUIDE	1	
1-20		NS-6090310-SP	螺母9"/64-40	NUT 9/64-40	1	
1-21		B1125-280-000	L形导线杆A	L-SHAPED THREAD GUIDE A	1	
1-22		B1126-552-000	牵线导杆A	ARM THREAD GUIDE A	1	
1-23		SS-3090610-SP	螺钉9"/64-40, L=6	SCREW 9/64-40 L=6	1	
1-24		B1109-980-000	架钩	BED FITTING HOOK	1	
1-25		SS-1110821-TP	螺钉11"/64-40, L=8.3	SCREW 11/64-40 L=8.3	2	
1-26		B1111-232-000	牵线导杆板	THREAD GUIDE PLATE	1	
1-27		SS-4150715-SP	螺钉15"/64-28, L=7	SCREW 15/64-28 L=7	1	
1-28		NS-6150310-SP	螺帽15"/64-28	NUT 15/64-28	1	
1-29		B1123-280-000	牵线导杆	FIRST THREAD GUIDE	1	
1-30		SS-8150822-TP	螺钉15"/64-28, L=8	SCREW 15/64-28 L=8	2	
1-31		135-01507	橡胶垫圈	RUBBER WASHER	2	
1-32		PS-0800202-KH	开口销8x20	SPRING PIN 8x20	2	
1-33		135-07801	底部连接销	BASE CONNEVTING PIN	2	
1-34		WP-1052000-SC	垫圈10.5x18x2	WASHER 10.5x18x2	1	
1-35		RE-0600000-KO	E形挡圈6	E-RING 6	1	
1-36		SS-7151120-SP	螺钉15"/64-28, L=11	SCREW 15/64-28 L=11	2	
1-37		135-38905	架盖A	BED COVER A	1	
1-38	#01	135-37709	架盖A	BED COVER A	1	
1-39		135-00608	拉线牵条	STAY	1	
1-40		135-01002	架锁扣	BDE ROCKER	1	
1-41		135-00707	拉线锁扣	STAY ROCKER	1	
1-42		135-00855	拉线导杆	STAY GUIDE ASM	1	
1-43		SD-0800341-SP	合叶螺丝D=8, H=3.4	HINGE SCREW D=8 H=3.4	2	
1-44		B2008-372-000	夹具棒弹簧	THREAD TENSION SPRING	1	
1-45		SS-7151210-SP	螺钉15"/64-28, L=12	SCREW 15/64-28 L=12	2	
1-46		135-00509	防震橡皮垫	VIBRATION-PROOF RUBBER	2	
1-47		135-00400	橡皮油封	RUBBER BUSH	2	
1-48		SM-0040601-SA	螺钉	SCREW	1	
1-49		WP-0450801-SD	垫圈4.5x10x0.8	WASHER 4.5x10x0.8	1	
1-50		RO-0442401-00	橡皮圈	RUBBER RING	1	
1-51		135-00319	架盖固定座	BED FITTING BASE	1	
1-52		B3101-280-0A0	安全金属板装置	SAFTY PLATE ASM.	1	
1-53		B3120-372-000	安全板	SAFETY PLATE	(1)	
1-54		SS-4110715-SP	螺钉11"/64-40, L=7	SCREW 11/64-40 L=7	(2)	
1-55		WP-0450801-SD	垫圈4.5x10x0.8	WASHER 4.5x10x0.8	(2)	
1-56		SD-0601021-SP	合叶螺丝D=6, H=10.2	HINGE SCREW D=6 H10.2	(1)	
1-57		139-43204	安全板扭簧	SAFETY PLATE RETURN SPRING	(1)	
1-58		WP-0740516-SP	垫圈7.4x11.8x0.5	WASHER 7.4x11.8x0.5	(1)	
1-59		B3121-372-000	安全板安装板	SAFERY PLATE INSTALLING PLATE	(1)	
1-60		B1506-352-000	牵引弹簧架B	TENSION SPRING RACK B	(1)	
1-61		SS-4110715-SP	螺钉11"/64-40, L=7	SCREW 11/64-40 L=7	(2)	
1-62		PS-0200062-KH	开口销2x6	SPRING PIN 2x6	(1)	
1-63		135-51205	安全板安装座	SAFETY PLATE INSTALLING BASE	(1)	
1-64		NS-6110310-SP	螺帽11"/64-40	NUT 11/64-40	(1)	
1-65		NS-6120310-SP	螺帽3"/16-28	NUT 3/16-28	(1)	
1-66		SS-6151220-SP	螺钉15"/64-28, L=11.5	ACREW 15/64-28 L=11.5	(1)	
1-67		B2714-761-000	弹簧悬挂螺钉	SPRING RACK	5	
1-68		B1124-280-000	牵线导杆B	ARM THREAD GUIDE B	1	
1-69		SD-0800681-SP	合叶螺丝D=8, H=6.8	HINGE SCREW D=8 H=6.8	1	
1-70		TA-2050406-RO	橡皮塞	RUBBER PLUG	2	
1-71		135-38806	弹簧	SPRING	1	
1-72		WP-0480856-SP	垫圈4.8x8.4x0.8	WASHER 4.8x8.4x0.8	2	
1-73		TA-0750704-RO	橡皮塞	RUBBER PLUG	2	
1-74		TA-1470704-RO	橡皮塞	RUBBER PLUG	1	
1-75	#02	135-51524	安全金属板装置	SAFERY PLATE ASM.	1	
1-76		135-02307	面板衬垫	FACE PACKING	1	
1-77		SS-7110710-SP	螺钉11"/64-40, L=7	SCREW 11/64-40 L=7	1	

Note(注记) #01.....FOR URBAN WHITE  
#02.....FOR JE

## 2. 主轴结构 / MAIN SHAFT COMPONENTS



## 2. 主轴结构 / MAIN SHAFT COMPONENTS

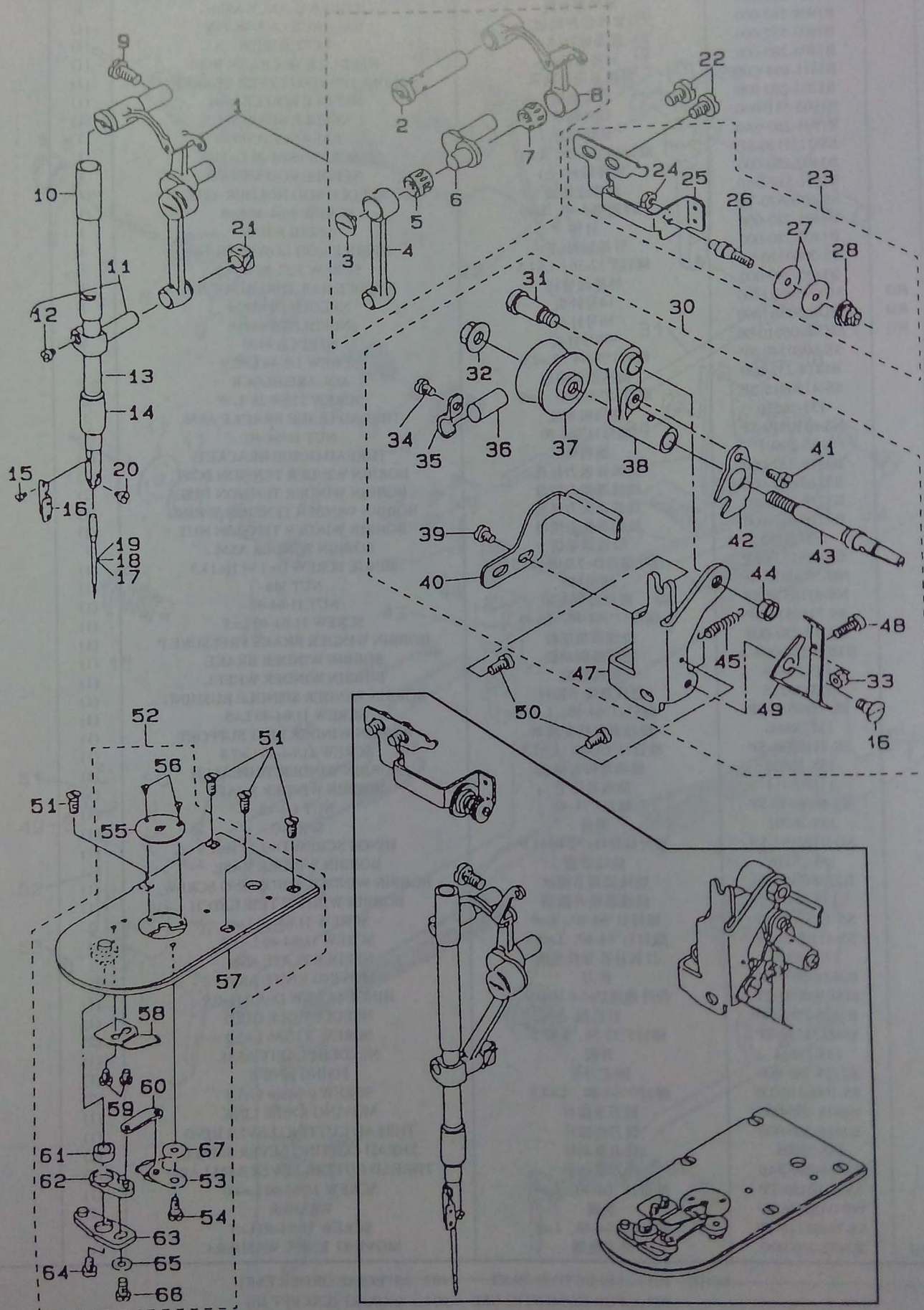
序号 Ref.no	注解 Note	零件图号 Part.no	中文名称	English Description	数量 Qty	备注 Remark
2-1		B1223-771-000	推力垫圈	NEEDLE ROD CRANK WASHER	1	
2-2		SS-6151412-TP	螺钉15"/64-28, L=14	SCREW 15/64-28 L=14	1	
2-3		SS-8660530-TP	螺钉1"/4-40, L=4.5	SCREW 1/4-40 L=4.5	1	
2-4		SS-6681712-TP	螺钉9"/32-28, L=16.5	SCREW 9/32-28 L=16.5	1	
2-5		SS-8660610-TP	螺钉1"/4-40, L=6	SCREW 1/4-40 L=6	1	
2-6		B1202-280-000	平衡物	COUNTER WEIGHT	1	
2-7		135-03206	前部轴衬	UPPER SHAFT FRONT METAL	1	
2-8		135-03107	主轴	MAIN SHAFT	1	
2-9		135-03305	轴衬	UPPER SHAFT INNER METAL	1	
2-10		135-10367	蜗杆	WORM ASM	1	
2-11		SS-7111410-TP	螺钉11"/64-40, L=14	SCREW 11/64-40 L=14	(4)	
2-12		CS-150111A-TH	推力环D=15, W=10.8	THRUSR COLLAR ASM. D=15 W=10.8	1	
2-13		SS-6661110-SP	螺钉1"/4-40, L=11	SCREW 1/4-40 L=11	(2)	
2-14		B1211-980-000	主轴推力轴承	UPPER SHAFT THRUSR BEARING	2	
2-15	#01	B1208-980-00B	主轴针轴承B	MAIN SHAFT NEEDLE BEARING B	1	
2-16		B1207-980-000	主轴轴衬	UPPER SHAFT REAR METAL	1	
2-17		B1210-980-000	螺钉	SET SCREW	1	
2-18		135-03453	线头修剪凸轮	THREAD CUTTING CUM ASM.	1	
2-19		SS-866112-TP	螺钉	SCREW	(1)	
2-20		SS-866112-TP	螺钉	SCREW	(1)	
2-21		SS-8151230-SP	螺钉15"/64-24, L=12	SCREW 15/64-28 L=12	1	
2-22		SS-6741512-TP	螺钉3"/8-28, L=14.5	SCREW 3/8-28 L=14.5	1	
2-23		SS-6742012-TP	螺钉3"/8-28, L=19.5	SCREW 3/8-28 L=19.5	1	
2-24		135-03552	止动凸轮装置	STOP-MOTION CAM ASM.	1	
2-25		135-03503	止动凸轮	STOP-MOTION CAM	(1)	
2-26		B1215-980-000	止动凸轮离合器	STOP MOTION CAM LATCH	(1)	
2-27		B1217-280-000	安全止动弹簧	SAFERY PLATE STOPPER SPRING	(1)	
2-28		135-03602	销	PIN	(1)	
2-29		135-03750	快速离合器金属板	HIGH SPEED CLUTCH PLATE ASM.	1	
2-30		SS-2110920-TP	螺钉11"/64-40, L=8.5	SCREW 11/64-40 L=8.5	2	
2-31		SS-1110640-TP	螺钉11"/64-40, L=5.5	SCREW 11/64-40 L=5.5	1	
2-32		135-04006	隔离片	SPACER	3	
2-33		135-03909	波形垫片	SPRING	2	
2-34		135-04204	快速滑轮	HIGH SPEED PULLEY	1	
2-35		SB-1350002	轴承 D=35x62	BEARING D=35x62	2	
2-36	#02	135-04907	薄垫片	SHIM	6	
2-37		135-04303	垫圈	WASHER	2	
2-38		RC-3221517-KP	挡圈32.2	RETAINING RING 32.2	1	
2-39		135-04105	慢速滑轮弹簧	SLOW SPEED PULLEY SPRING	3	
2-40		RC-6622018-KP	挡圈66.2	RETAINING RING66.2	2	
2-41		135-04451	滑轮装置	PULLEY ASM.	1	
2-42		SS-1110640-TP	螺钉11"/64-40, L=5.5	SCREW 11/64-40 L=5.5	(3)	
2-43		135-04402	滑轮	PULLEY	(1)	
2-44		135-04501	滑轮轴	PULLEY SHAFT	(1)	
2-45		SS-8660612-TP	螺钉1"/4-40, L=6	SCREW 1/4-40 L=6	1	
2-46		135-04600	慢速滑轮轴	SLOW SPEED PULLEY SHAFT	1	
2-47		SS-8661112-TP	螺钉1"/4-40, L=11	SCREW 1/4-40 L=11	1	
2-48		135-04709	慢速滑轮	SLOW SPEED PULLEY	1	
2-49		135-04808	慢速滑轮板	SLOW SPEED PULLEY PLATE	1	
2-50		VS-0451040-KP	弹簧垫圈4.5x8.5x1	SPRING WASHER 4.5x8.5x1	2	
2-51		SS-7111120-TP	螺钉	SCREW	2	
2-52		135-05003	滚珠护圈	BALL RETAINER	1	
2-53		SS-2090710-TP	螺钉9"/64-40, L=7.2	SCREW 9/64-40 L=7.2	2	
2-54		B1253-980-000	止推滚珠	STOP-MOTION BALL	1	
2-55	#01	135-05201	隔离片	PULLEY SPACER	3	
2-56	#02	135-05102	调节器薄垫片	REGULATOR SHIM	6	

Note #01.....SELECTIVE PART

#02.....UP TO 6 PCS OF THIS PLATE .ARE

USED AS REQUIRED

### 3. 针棒的结构 / NEEDLE BAR COMPONENTS

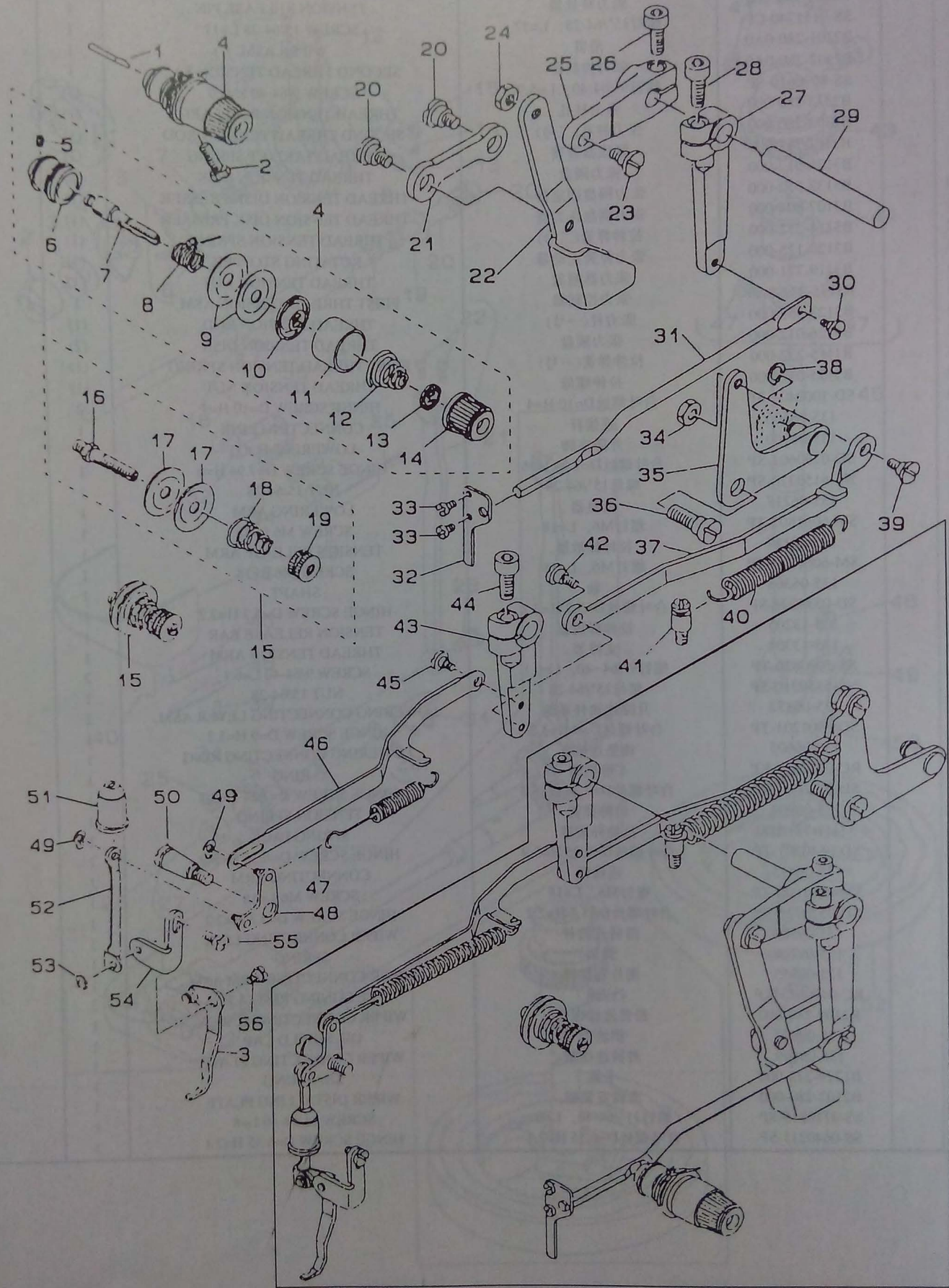


### 3. 针棒的结构 / NEEDLE BAR COMPONENTS

序号 Ref.no	注解 Note	零件图号 Part.no	中文名称	English Description	数量 Qty	备注 Remark
3-1		B1901-280-080	紧线器系统	LIND BALANCE ASM.	1	
3-2		B1904-280-000	紧线器杆插销	BALANCE CRANK PIN	(1)	
3-3		B1903-552-000	底部螺钉(左)	LEFT SCREW	(1)	
3-4		B1404-280-000	针棒曲柄杆	NEEDLE BAR CRANK ROD	(1)	
3-5		B1411-804-C00	针棒驱动杆轴承	NEEDLE DRIVING LEVER BEARING C	(1)	
3-6		B1203-280-000	针棒曲柄	NEEDLE ROD CRANK	(1)	
3-7		B1905-541-B00	针夹轴承	NEEDLE BEARING	1	
3-8		B1901-280-0A0	紧线器杆	BALANCE ASM.	1	
3-9		SS-7151120-SP	螺钉15"/64-28、L=11	SCREW 15/64-28 L=11	1	
3-10		B1402-280-000	针棒轴衬(上)	NEEDLE ROD METAL	1	
3-11		B1411-552-0A0	针棒连接处	NEEDLE ROD HOLDER ASM.	(1)	
3-12		SS-6060670-TP	螺钉9"/64-40、L=6	SCREW 9/64-40 L=6	1	
3-13		B1401-280-000	针棒	NEEDLE BAR	1	
3-14		B1403-280-000	针棒轴衬(下)	NEEDLE ROD LOWER GUIDE	1	
3-15		SS-2060510-SP	螺钉3"32-56、L=4.5	SCREW 3/32-56 L=4.5	1	
3-16		B1405-280-000	针棒线导杆	NEEDLE BAR THREAD GUIDE	1	
3-17	#03	MDP-500B1400	14号针头	NEEDLE DPx5#14	1	
3-18	#04	MDP-500B1600	16号针头	NEEDLE DPx5#16	1	
3-19	#02	MC-2005010-00	100号针头	NEEDLE #100	1	
3-20		SS-6080340-SP	螺钉1"/8-44、L=2.9	SCREW 1/8-44 L=2.9	1	
3-21		B1414-232-000	曲柄滑动阻尼	AQUARE BLOCK	1	
3-22		SS-4150915-SP	螺钉15"/64-28、L=9	SCREW 15/64-28 L=9	2	
3-23		135-26850	络筒机系统	THREAD GUIDE BRACKE ASM.	1	
3-24		NS-6110310-SP	螺母11"/64-40	NUT 11/64-40	(1)	
3-25		135-26801	络筒机	THREAD GUIDE BRACKET	(1)	
3-26		B3219-232-000	绕线器张力柱孔	BOBBIN WINDER TENSION POST	(1)	
3-27		B3214-047-000	绕线器张力圆盘	BOBBIN WINDER TENSION DISE	(2)	
3-28		B3218-232-000	绕线器张力弹簧	BOBBIN WINDER TENSION SPRING	(1)	
3-29		B3216-047-000	绕线器张力螺母	BOBBIN WINDER TENSION NUT	(1)	
3-30		135-26157	绕线器系统	BOBBIN WINDER ASM.	1	
3-31		SD-0791331-SP	合叶螺丝D=7.94H=13.3	HINGE SCREW D=7.94 H=13.3	(1)	
3-32		NH-3060810-SF	螺母M6	NUT M6	(1)	
3-33		NS-6110530-SP	螺母11"/64-40	NUT 11/64-40	(1)	
3-34		SS-7110510-SP	螺母11"/64-40、L=40	SCREW 11/64-40 L=5	(1)	
3-35		B3210-280-000	绕线器制压板	BOBBIN WINDER BRAKE PRESSURE P	(1)	
3-36		B3209-280-000-A	绕线器制动板	BOBBIN WINDER BRAKE	(1)	
3-37		135-26413	绕线器轮	BOBBIN WINDER WHEEL	(1)	
3-38		135-26215	绕线器锭子轴衬	BOBBIN WINDER SPINDLE BUSHING	(1)	
3-39		SS-7110510-SP	螺钉11"/64-40、L=5	SCREW 11/64-40 L=5	(1)	
3-40		135-26900	绕线器带状支撑架	BOBBIN WINDER BELT SUPPORT	(1)	
3-41		SS-7110840-SP	螺钉11"/64-40、L=7.5	SCREW 11/64-40 L=7.8	(1)	
3-42		135-26504	绕线器松开插销	BOBBIN WINDER TRIPLATCH	(1)	
3-43		135-26314	绕线器锭子	BOBBIN WINDER SHAFT	(1)	
3-44		NS-6660430-SP	螺母1"/4-40	NUT 1/4-40	(1)	
3-45		135-26702	弹簧	SPRING	(1)	
3-46		SD-0720193-SP	合叶螺丝D=7.24H=1.9	HINGE SCREW D=7.24 H=1.9	(1)	
3-47		135-26116	绕线器盒	BOBBIN WINDER BASE	(1)	
3-48		B3208-280-000	绕线器调节螺丝	BOBBIN WINDER ADJUSTING SCREW	(1)	
3-49		135-26166	绕线器松开插销	BOBBIN WINDER TRIP LATCH	(1)	
3-50		SS-4110915-SP	螺钉11"/64-40、L=9	SCREW 11/64-40 L=9	(1)	
3-51		SS-1110640-TP	螺钉11"/64-40、L=5.5	SCREW 11/64-40 L=5.5	2	
3-52		135-15556	针板针孔导杆系统	NEEDLE PLATE ASM.	4	
3-53		B2421-280-0A0	转刀	MOVING KNIFE ASM.	1	
3-54		SD-0500091-TP	合叶螺丝D=5.0 H=0.9	HINGE SCREW D=5.0 H=0.9	(1)	
3-55		B2426-280-000	针孔板	NEEDLE HOLE GUID	(1)	
3-56		SS-8151230-SP	螺钉3"32-56、L=2.2	SCREW 3/32-56 L=2.2	(1)	
3-57		135-15564	针板	NEEDLE PLATTE ASM.	(2)	
3-58		B2424-280-000	固定刀片	FISING KNIFE	(1)	
3-59		SS-1060210-TP	螺钉9"/64-40、L=3.5	SCREW 9/64-40 L=3.5	(1)	
3-60		B2418-280-000	转刀连接杆	MOVING KNIFE LINK	(2)	
3-61		B2416-280-000	转刀连接杆	THREAD CUTTING LEVER RING	(1)	
3-62		135-38608	转刀驱动杆	THRAD CUTTING LEVER SMALL	(1)	
3-63		B2414-280-0A0	转刀驱动架	THREAD CUTTRR LEVER ASM.LARG	(1)	
3-64		SS-6110430-TP	螺钉11"/64-40、L=4	SCREW 11/64-40 L=4.0	(1)	
3-65		WP-0450846-SP	垫圈	WASHER	(1)	
3-66		SS-71108740-TP	螺钉11"/64-40、L=7	SCREW 11/64-40 L=7	(2)	
3-67	#01	B2432-280-00C	转刀垫圈	MOVING KNIFE WASHER C	(1)	

NOTE #01.....SELECTIVE. PART #02.....SPECIAL ORDER PART  
 #03.....FOR DOMESTIC USE #04.....EXPORT (EXCEPT JF.)

# 4. 紧线的装置 / THREAD TENSION RELEASE COMPONENTS

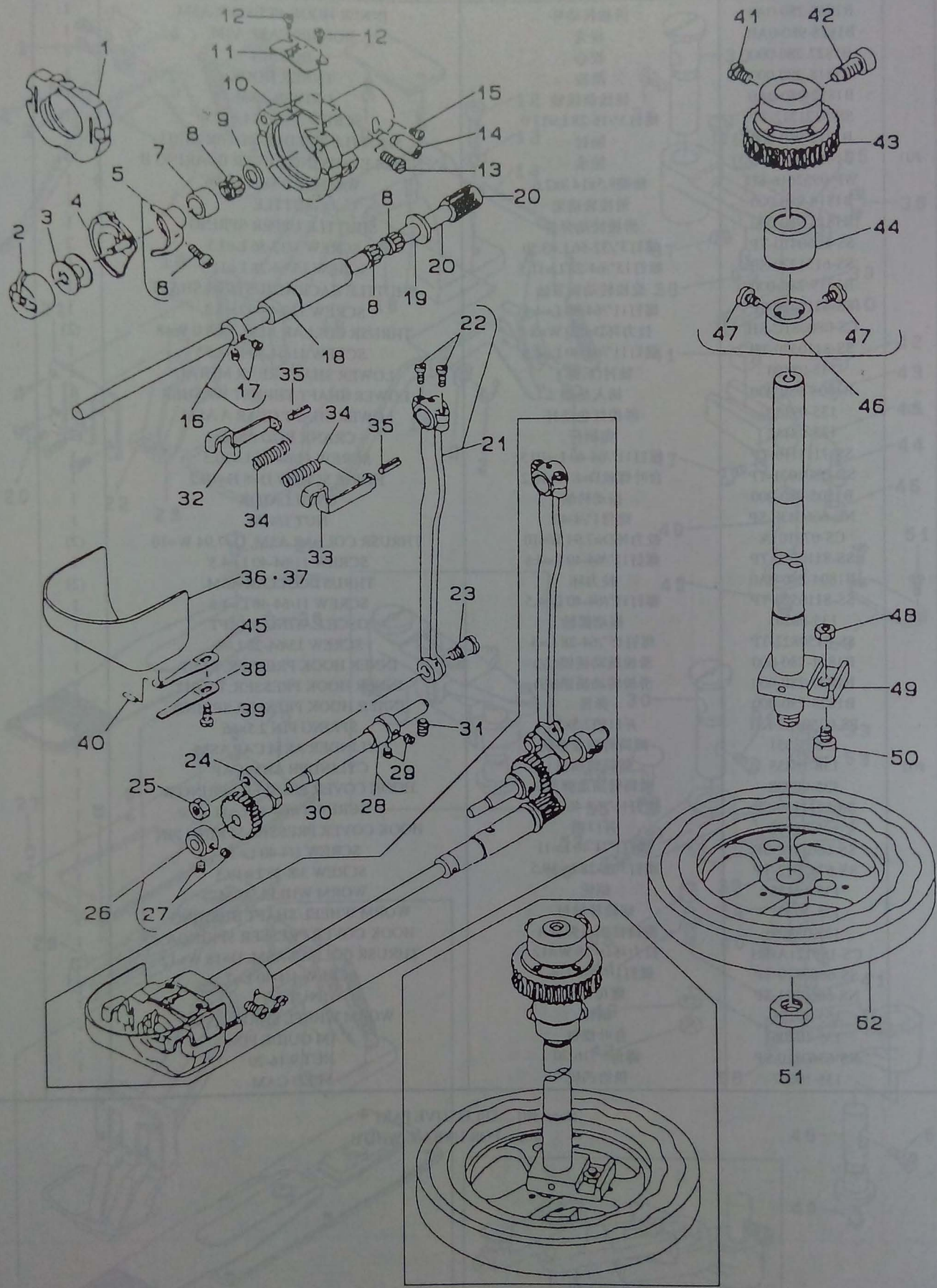


# 4. 紧线的装置 / THREAD TENSION RELEASE COMPONENTS

序号 Ref.no	注解 Note	零件图号 Part.no	中文名称	English Description	数量 Qty	备注 Remark
4-1		B2303-280-000	张力释放器	TENSION RELEASE PIN	1	
4-2		SS-9151740-CP	螺钉15"/64-28、L=17	SCREW 15/64-28 L=17	1	
4-3		B2101-280-0A0	滑臂	WIPER ASM.	1	
4-4		B2302-280-0A0	张力控制器	SECOND THREAD TENSION SA..	(1)	
4-5		SS-8090610-SP	螺钉9"/64-40、L=5.9	SCREW 9/64-40 L=5.9	(1)	
4-6		B2313-280-000	张力柱孔	THREAD TENSION ROD,LARGH	(1)	
4-7		B2302-280-000	张力柱孔(二号)	SECOND THREAD TENSION ROD	(1)	
4-8		B3112-761-000	紧线器弹簧	THREAD TAKE-UP SPRING	(2)	
4-9		B3126-012-000	张力圆盘	THREAD TENSION DISK	(1)	
4-10		B3132-552-000	张力圆盘固定器	THREAD TENSION DISK PRESSER	(1)	
4-11		B3107-804-000	张力圆盘压力管	THREAD TENSION DISK PRESSER	(1)	
4-12		B3114-232-000	拉伸弹簧(二号)	THREAD TENSION SPRING	(1)	
4-13		B3120-125-000	张力弹簧止动器	ROTATING STOPPER	(1)	
4-14		B3119-771-000	张力器帽盖	THREAD TENSION NUT	(1)	
4-15		B1115-232-0A0	张力控制器	FIRST THREAD TENSION ASM.	1	
4-16		B3123-352-000	张力柱(一号)	THREAD TENSION ROD	(1)	
4-17		B3126-012-000	张力圆盘	THREAD TENSION DISK	(2)	
4-18		B1115-232-000	拉伸弹簧(一号)	FIRST THREAD TENSION SPRING	(1)	
4-19		B3125-012-000	拉伸螺母	THREAD TENSION NUT	(1)	
4-20		SD-1000401-SP	合叶螺丝D=10 H=4	HINGE SCREW D=10 H=4	2	
4-21		135-06506	连接杆	CONNECTING LINK	1	
4-22		135-06100	升降底脚	LOWERING FOOT	1	
4-23		SD-0790601-SP	合叶螺丝D=7.94 H=6	HINGE SCREW D=7.94 H=6	1	
4-24		NS-6150310-SP	螺母15"/64-28	NUT 15/64-28	1	
4-25		135-06217	调整器	LOWERING ARM	1	
4-26		SM-6061802-TP	螺钉M6、L=18	SCREW M6 L=18	1	
4-27		135-13114	拉伸释放器	TENSION RELEASE ARM	1	
4-28		SM-6061802-TP	螺钉M6、L=18	SCREW M6 L=18	1	
4-29		135-06308	轴	SHAFT	1	
4-30		SD-0530221-SP	合叶螺丝D=5.3 H=2.2	HINGE SCREW D=5.3 H=2.2	1	
4-31		135-13205	拉伸释放器	TENSION RELEASE BAR	1	
4-32		135-13304	支撑架	THREAD TENSION ARM	1	
4-33		SS-7090620-TP	螺钉9"/64-40、L=6.1	SCREW 9/64-40 L=6.1	1	
4-34		NS-6150310-SP	螺母15"/64-28	NUT 15/64-28	2	
4-35		135-06852	升降连接杆系统	LOWERING CONNECTING LEVER ASM.	1	
4-36		SD-0901201-TP	合叶螺丝D=9 H=3.2	HINGE SCREW D=9 H=3.2	1	
4-37		135-06605	调整连接环	LOWERING CONNECTING RING	1	
4-38		RC-0740811-KP	C形挡圈	C-RING	1	
4-39		SD-0720331-SP	合叶螺丝D=7.24 H=3.3	HINGE SCREW D=7.24 H=3.3	1	
4-40		135-06704	拉伸弹簧	TENSION SPRING	1	
4-41		33411-771-000	拉伸释放器	SPRING PACK	1	
4-42		SD-0640391-TP	合叶螺丝D=6.35 H=3.9	HINGE SCREW D=6.35 H=3.9	1	
4-43		135-06415	连接臂	CONNECTING ARM	1	
4-44		SM-6061802-TP	螺钉M6、L=18	SCREW M6 L=18	1	
4-45		SD-0530221-SP	合叶螺丝D=5.3 H=2.2	HINGE SCREW D=5.3 H=2.2	1	
4-46		135-09500	滑臂连接杆	WIPER CONNECTING LINK	1	
4-47		135-09708	弹簧	SPRING	1	
4-48		135-09955	滑片连接臂	WIPER CONNECTING ARM ASM.	1	
4-49		RC-0470611-KP	挡圈4.7	RETAINING RING 4.7	1	
4-50		B2109-280-000	滑臂连接螺丝	WIPER CONNECTING SCREW	2	
4-51		135-09807	护油帽	OIL SHIELD CAP	1	
4-52		135-09609	滑臂连接板	WIPER CONNECTING PLATE	1	
4-53		B1229-232-000	卡簧	SNAP RING	1	
4-54		B2102-280-000	滑臂安装板	WIPER INSTALLING PLATE	1	
4-55		SS-4110815-SP	螺钉11"/64-40、L=8	SCREW 11/64-40 L=8	1	
4-56		SS-0640211-SP	合叶螺丝D=6.35 H=2.1	HINGE SCREW D=6.35 H=2.1	1	



5. 供给机械装置结构 / SHUTTLE DRIVER SHAFT COMPONENTS

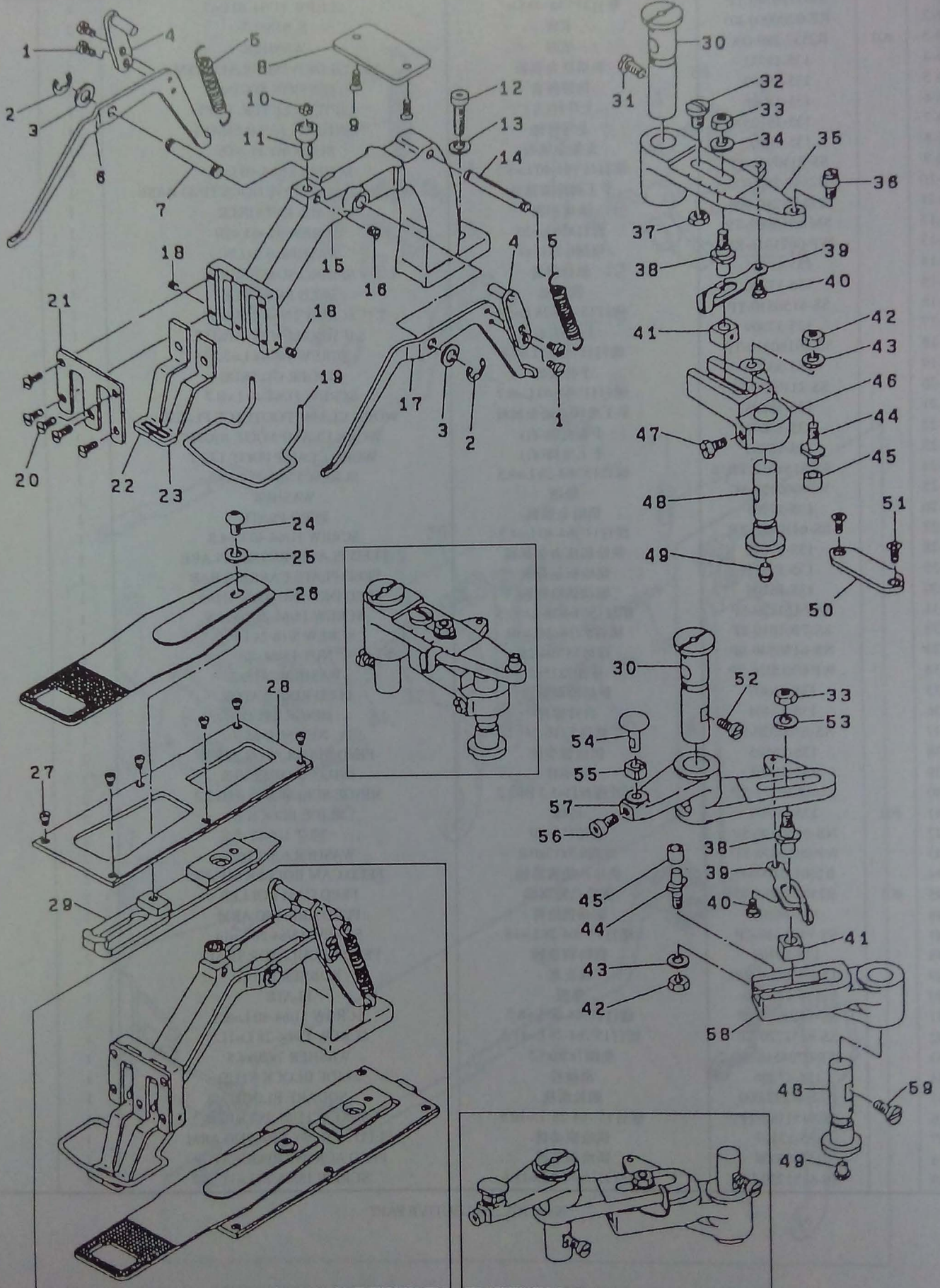


# 5. 供给机械装置结构 / SHUTTLE DRIVER SHAFT COMPONENTS

序号 Ref.no	注解 Note	零件图号 Part.no	中文名称	English Description	数量 Qty	备注 Remark
5-1		B1817-280-0A0	滑梭转动环	INNER HOOK PRESSER ASM.	1	
5-2		B1828-980-0AB	梭壳	BOBBIN CASE ASM.	1	
5-3		B1827-280-000	梭心	BOBBIN	1	
5-4		B1818-280-000	滑梭	TINNER HOOK	1	
5-5		B1812-980-0A0	绕线筒线轴	DRIVER ASM.	(1)	
5-6		SS-6121212-TP	螺钉3"/16-28 L=12.0	SCREW 3/16-28 L=12.0	1	
5-7		B1812-980-000	轴衬	SHUTTLE NEEDLE OUTER RING	3	
5-8	#01	B1411-804-B00	轴承	NEEDLE DRIVING LEVER BEARING B	1	
5-9		WP-0952616-SD	垫圈9.5x14.8x2.6	WASHER 9.5x14.8x2.6	1	
5-10		B1814-980-000	滑梭转动架	SUTTLE	1	
5-11		B1815-980-000	滑梭转动弹簧	SHUTTLE UPPER SPRING	2	
5-12		SS-6060410-TP	螺钉3"/32-56 L=3.50	SCREW 3/32-56 L=3.5	1	
5-13		SS-6151220-SP	螺钉15"/64-28 L=11.5	SCREW 15/64-28 L=11.5	1	
5-14		B1819-280-000	旋梭调节轴	SHUTTLE RACE ADJUSTING SHAFT	1	
5-15		SS-6110480-SP	螺钉11"/64-40 L=4.3	SCREW 11/64-40 L=4.3	(2)	
5-16		CS-080081C-SH	拉力环D=8.0 W=8	THRUSR COLLAR ASM. D=8.0 W=8	1	
5-17		SS-8110520-TP	螺钉11"/64-40 L=4.5	SCREW 11/64-40 L=4.5	1	
5-18		135-08403	轴衬(后部)	LOWER SHAFT REAR METAL	1	
5-19		B1808-980-000	插入垫圈	LOWER SHAFT THRUST WASHER	1	
5-20	#01	135-09153	滑梭红色动杆	LOWER SHAFT GEAR A ASM.	1	
5-21		135-08155	曲柄杆	CRANK ROD ASM.	(2)	
5-22		SS-7111110-TP	螺钉11"/64-40 L=10.5	SCREW 11/64-40 L=10.5	1	
5-23		SD-0801021-TP	合叶螺丝D=8 H=10.2	HINGE SCREW D=8 H=10.2	1	
5-24		B1805-980-000	振动转轴	OSCILLATOR	1	
5-25		NS-6660430-SP	螺母1"/4-40	NUT 1/4-40	1	
5-26		CS-079101A	拉力环D=7.94 W=10	THRUSR COLLAR ASM. D=7.94 W=10	(2)	
5-27		SS-8110520-TP	螺钉11"/64-40 L=4.5	SCREW 11/64-40 L=4.5	1	
5-28		B1804-280-0A0	拉力环	THRUST COLLAR ASM.	(2)	
5-29		SS-8110520-TP	螺钉11"/64-40 L=4.5	SCREW 11/64-40 L=4.5	1	
5-30		135-08205	振动摇轴	OSCILLATING SHAFT	1	
5-31		SS-8150822-TP	螺钉15"/64-28 L=8	SCREW 15/64-28 L=8	1	
5-32		B1821-280-000	滑梭转动插销(左)	INNER HOOK PRESSER, LEFT	1	
5-33		B1820-280-000	滑梭转动插销(右)	INNER HOOK PRESSER, RIGHT	2	
5-34		B1823-280-000	弹簧	INNER HOOK PRESSER SPRING	2	
5-35		PS-0250162-KH	开口销2.5x16	SPRING PIN 2.5x16	1	
5-36		135-08551	圆筒臂顶盖系统	CYLINDER ARM CAP ASM.	1	
5-37	#02	138-16855	圆筒臂顶盖	CYLINDER ARM CAP	1	
5-38		135-08908	圆筒臂顶盖弹簧B	HOOK COVER PRESSER SPRING B	1	
5-39		SS-6111140-SP	螺钉11"/64-40 L=11	SCREW 11/64-40 L=11	1	
5-40		135-08700	开口销	HOOK COVER PRESSER SPRING PIN	1	
5-41		SS-6661110-SP	螺钉1"/4-40 L=11	SCREW 1/4-40 L=11	1	
5-42		SS-6742012-TP	螺钉3"/8-28 L=19.5	SCREW 3/8-28 L=19.5	1	
5-43		135-10458	蜗轮	WORM WHEEL ASM.	1	
5-44		135-10201	蜗轮杆轴衬	WORM WHEEL SHAFT BUSHING	1	
5-45		135-08809	圆筒臂顶盖弹簧A	HOOK COVER PRESSER SPRING A	1	
5-46		CS-180121A-SH	拉力环D=18 W=12	THRUSR COLLAR ASM. D=18 W=12	(2)	
5-47		SS-6660710-TP	螺钉1"/4-40 L=7	SCREW 1/4-40 L=7	1	
5-48		NS-6660511-SP	螺母1"/4	NUT 1/4	1	
5-49		135-10151	蜗轮	WORM WHEEL SHAFT ASM.	1	
5-50		135-10706	合叶螺钉	CAM GUIDE PIN	1	
5-51		NS-6360810-SP	螺母9"/16-20	NUT 9/16-20	1	
5-52		135-10607	供给凸轮	FEED CAM	1	

Note #01....SELECTIVE PART  
#02....FOR URBAN. WHITE

6. 滑梭传动杆结构 / FEED MECHANISM COMPONENTS

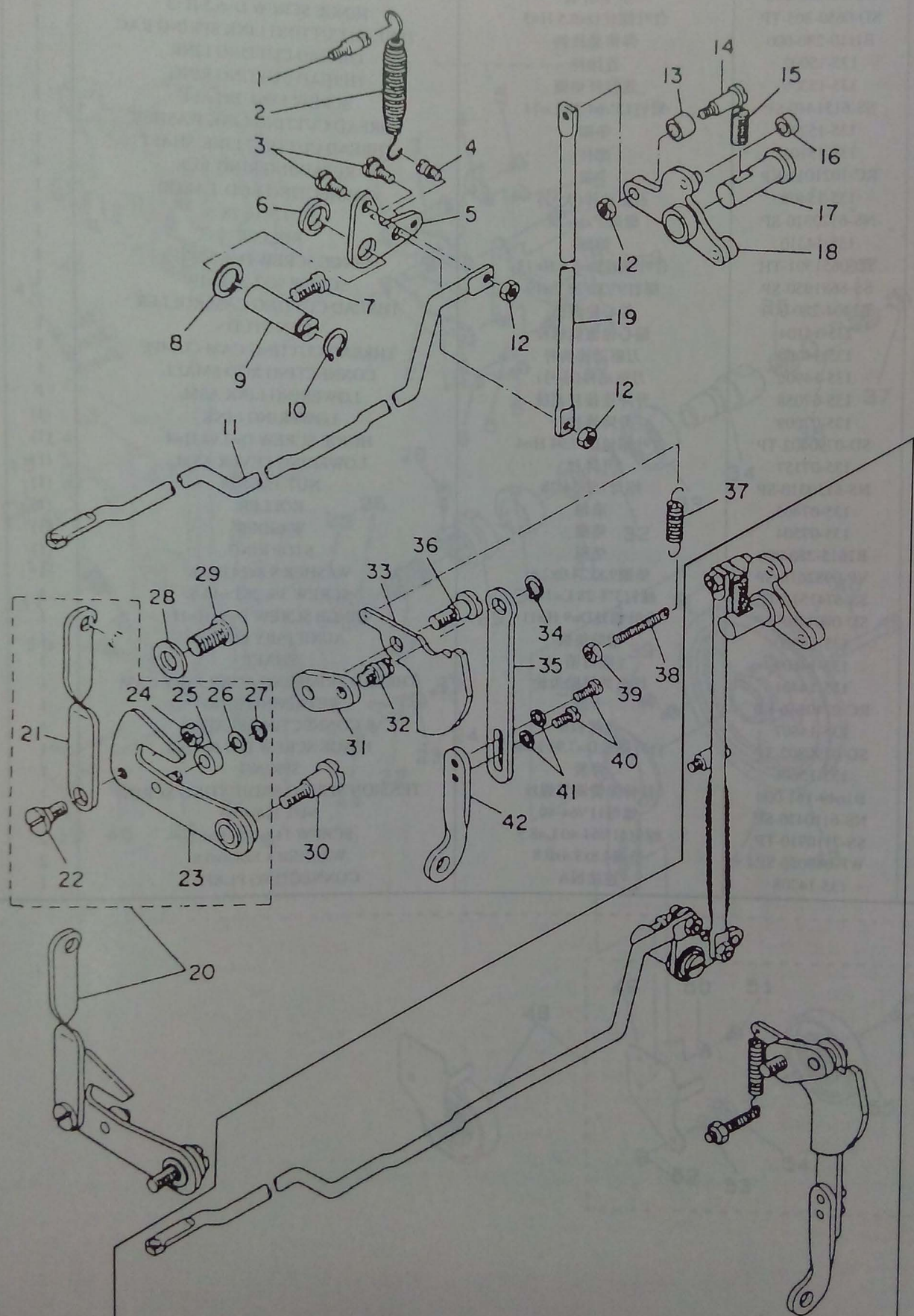


## 6. 滑梭传动杆结构 / FEED MECHANISM COMPONENTS

序号 Ref.no	注解 Note	零件图号 Part.no	中文名称	English Description	数量 Qty	备注 Remark
6-1		SS-7110740-TP	螺钉11"/64-40 L=7	SCREW 11/64-40 L=7	4	
6-2		RE-0700000-K0	卡簧	E-RING 7	2	
6-3	#01	B2557-280-00C	垫圈	WASHER	2	
6-4		135-18352	驱动杆金属板	LEVER DRIVING PLATE ASM.	2	
6-5		135-18402	拉伸弹簧	TENSION SPRING	2	
6-6		135-18006	上升杆(左)	LIFTING LEVER, LEFT	1	
6-7		135-18105	上升杆轴	LIFTING LEVER SHAFT	1	
6-8		135-18907	支架金属板	SUPPORT PLATE	1	
6-9		SS-2110920-TP	螺钉11"/64-40 L=8.5	SCREW 11/64-40 L=8.5	2	
6-10		B2549-280-000	手工脚座架滚珠	WORK CLAMP FOOT HOUNTING BASE	1	
6-11		B2548-280-000	滚珠护圈	BALL RETAINER	1	
6-12		SM-6062002-TP	螺钉M6 L=20	SCREW M=6 L=20	1	
6-13		WP-0621016-SD	垫圈6.2x13x1	WASHER 6.2x13x1	1	
6-14		135-18501	悬挂弹簧	SPRING SUSPENSION	1	
6-15		135-17800	供给架	FEED BRACKER	1	
6-16		SS-8150510-TP	螺钉15"/64-28 L=28	SCREW 15/64-28 L=4.7	1	
6-17		135-17909	上升杆(右)	LIFTING LEVER, RIGHT	1	
6-18		SS-80180310-TP	螺钉11"/8-44 L=2.8	SCREW 1/8-44 L=2.8	2	
6-19		135-33104	手护装置	FINGER GUARDE	1	
6-20		SS-2110930-SP	螺钉11"/64-40 L=8.7	SCREW 11/64-40 L=8.7	3	
6-21		135-18808	手工夹脚正面金属板	WORK CLAMP FOOTFACE PLATE	1	
6-22		135-18600	手工夹脚(右)	WORK CLAMP FOOT, RIGHT	1	
6-23		135-18709	手工夹脚(左)	WORK CLAMP FOOT, LEFT	1	
6-24		SS-3151012-TR	螺钉15"/64-28 L=9.5	SCREW 15/64-28 L=9.5	1	
6-25		WP-065100-SC	垫圈	WASHER	1	
6-26		135-17701	供给金属板	FEED PLATE	1	
6-27		SS-6110420-TP	螺钉11"/64-40 L=4.3	SCREW 11/64-40 L=4.8	1	
6-28		135-17602	供给板压力金属板	FEED PLATE PRESSER PLARE	1	
6-29		135-17511	供给板运载板	FEED PLATE CARRIER BAR	1	
6-30		135-16208	驱动供给臂轴	FEED DRIVING ARM SHAFT	1	
6-31		SS-6151220-SP	螺钉15"/64-28 L=11.5	SCREW 15/64-28 L=11.5	1	
6-32		SS-7701010-SP	螺钉5"/16-24L=10	SCREW 5/16-24 L=10	1	
6-33		NS-6150540-SP	螺母15"/64-28	NUT 15/64-28	2	
6-34		WP-0702026-SP	垫圈7x15x2	WASHER 7x15x2	1	
6-35		135-16307	供给圈调节器	FEED REGULATOR	1	
6-36		135-17404	合叶螺栓	HINGE STUD	1	
6-37		NS-6700320-SP	螺母5"/16-24	NUT 5/16-24	1	
6-38		135-16505	供给调节栓	FEED REGULATOR STUD	2	
6-39		135-16901	显示杆	INDICAROT LEVER	2	
6-40		SD-0530221-SP	合叶螺丝D=5.3 H=2.2	HINGE SCREW D=5.3 H=2.2	2	
6-41	#01	135-16703	滑块	SLIDE BLOCK B	2	
6-42		NS-6660430-SP	螺母1"/4-40	NUT 1/4-40	2	
6-43		WP-0650876-SD	垫圈6.5x13x0.8	WASHER 6.5x13x0.8	2	
6-44		B2501-280-000	供给凸轮滚筒轴	FEED CAM ROLLER SHAFT	2	
6-45	#01	B2502-280-00B	供给凸轮滚筒	FEED CAM ROLLER	2	
6-46		135-16109	驱动供给臂	FEED KRIVING ARM	1	
6-47		SS-9151440-CP	螺钉15"/64-28 L=14	SCREW 15/64-28 L=14	1	
6-48		135-50108	供给调节轴	FEED REGULATOR SHAFT	2	
6-49		TA-0550604-R0	橡皮塞	RUBBER PLUG	2	
6-50		135-17305	垫板	PLATE	1	
6-51		SS-1110821-TP	螺钉11"/64-40 L=8.3	SCREW 11/64-40 L=8.3	2	
6-52		SS-6151220-SP	螺钉15"/64-28 L=11.5	SCREW 15/64-28 L=11.5	1	
6-53		WP-0704516-SP	垫圈7x20x4.5	WASHER 7x20x4.5	1	
6-54		135-17206	滑块栓	SLIDE BLOCK STUD	1	
6-55		B1414-232-000	曲栓滑块	SQUARE BLOCK	1	
6-56		SS-6151142-TP	螺钉15"/64-28 L=10.5	SCREW 15/64-28 L=10.5	1	
6-57		135-17107	供给驱动臂	FEED ACROSS DRIVING ARM	1	
6-58		135-17008	供给调节器	FEED ACROSS REGULATOR	1	
6-59		SS-6151220-SP	螺钉15"/64-28 L=11.5	SCREW 15/64-28 L=11.5	1	

Note #01....SELECTIVE PART

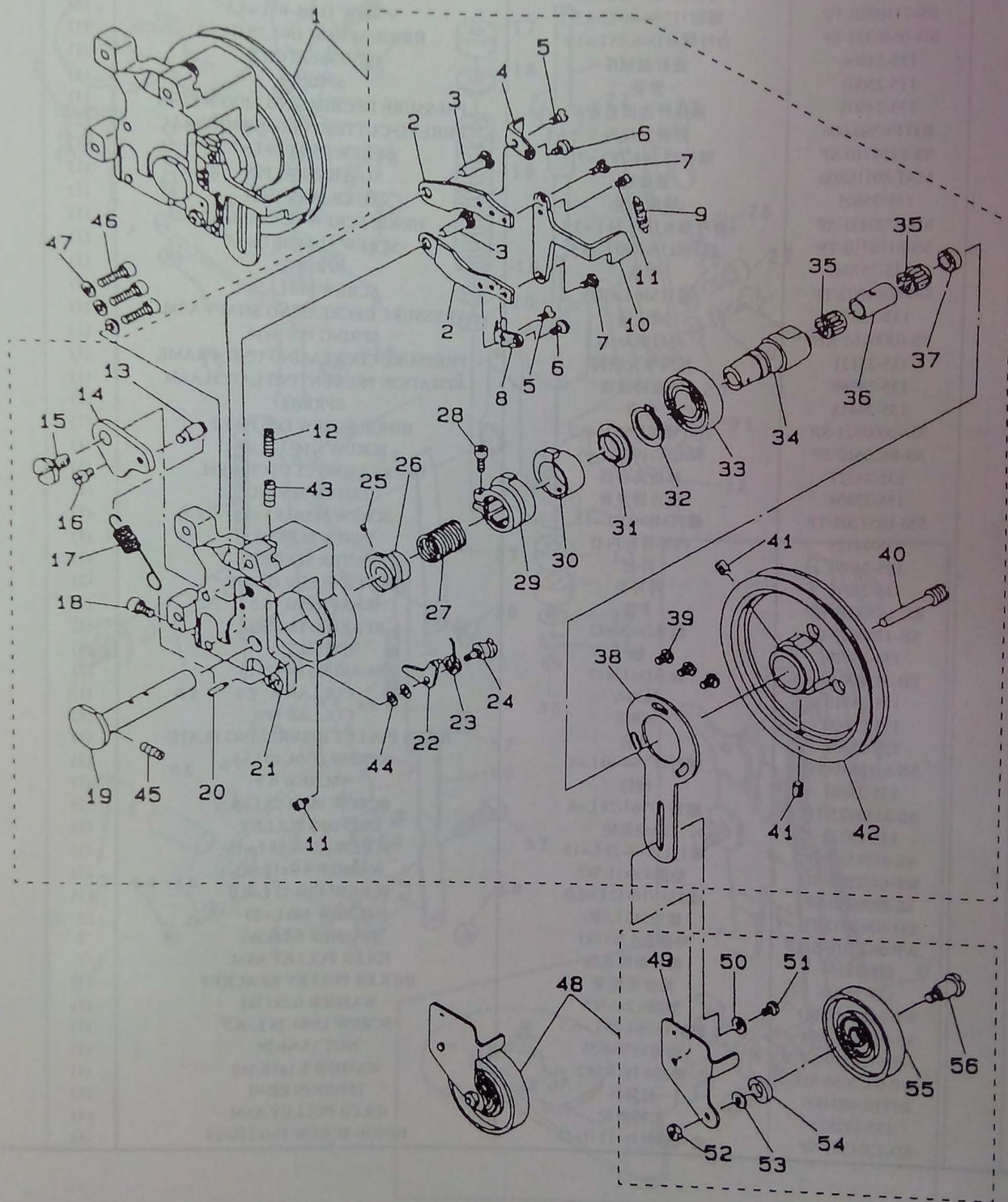
# 7. 线头修剪结构 / THREAD TRIMMING COMPONENTS



## 7. 线头修剪结构 / THREAD TRIMMING COMPONENTS

序号 Ref.no	注解 Note	零件图号 Part.no	中文名称	English Description	数量 Qty	备注 Remark
7-1		B1506-352-000	悬挂螺丝B	TENSION SPRING RACK B	1	
7-2		B2410-980-000	拉伸弹簧	TENSION SPRING	1	
7-3		SD-0650-305-TP	合叶螺丝D=6.5 H=3	HINGE SCREW D=6.5 H=3	2	
7-4		B1110-280-000	弹簧悬挂钩	TEREAD CUTTING LINK SPRING RAC	1	
7-5		135-15002	连接杆	THREAD CUTTING LINK	1	
7-6		135-15309	连接杆垫圈	THREAD CUTTING RING	1	
7-7		SS-6151440-SP	螺钉15"/64-28 L=14	SCREW 15/64-28 L=14	1	
7-8		135-15200	垫圈	THREAD CUTTING LINK WASHER	1	
7-9		135-15101	螺柱	THREAD CUTTING LINK SHAFT	1	
7-10		RC-1021011-KP	卡簧	RETAINING RING 10.2	1	
7-11		135-15408	刀驱动棒(大号)	CONNECTING ROD. LARGE	1	
7-12		NS-6120310-SP	螺母3"/16-28	NUT 3/16-28	3	
7-13		135-14310	滚轴	ROLLER	1	
7-14		SD-0651301-TH	合叶螺丝D=6.5 H=13	HINGE SCREW D=6.5 H=13	1	
7-15		SS-8681950-SP	螺钉9"/32-28 L=19	SCREW 9/32-28 L=19	1	
7-16		B2404-280-000	偏心轮滚筒	THREAD CUTTING CAM ROLLER	1	
7-17		135-14104	偏心轮滚筒螺栓	CAN STUD	1	
7-18		135-34060	刀驱动棒钩杆	THREAD CUTTING CAM COMPE	1	
7-19		135-14906	刀驱动棒(小号)	CONNECTING ROD SMALL	1	
7-20		135-07058	升降连接杆系统	LOWERING LINK ASM.	1	
7-21		135-07009	升降连接杆	LOWERING LINK	(1)	
7-22		SD-0790402-TP	合叶螺丝D=7.94 H=4	HINGE SCREW D=7.94 H=4	(1)	
7-23		135-07157	升降杆	LOWERING LEVER ASM.	(1)	
7-24		NS-6150310-SP	螺母15"/64-28	NUT 15/64-28	(1)	
7-25		135-07405	滚轴	ROLLER	(1)	
7-26		135-07504	垫圈	WASDER	(1)	
7-27		B2615-280-000	垫圈	STOP RING	(1)	
7-28		VP-0982616-SP	垫圈9.8x24.0x2.6	WASHER 9.8x24.0x2.6	1	
7-29		SS-6741512-TP	螺钉3"/8-28 L=14.5	SCREW 3/8-28 L=14.5	1	
7-30		SD-0901101-SP	合叶螺丝D=9 H=11	HINGE SCREW D=9 H=11	1	
7-31		135-14500	辅助垫板	AUXILIARY LEVER	1	
7-32		135-14609	螺钉销	SHAFT	1	
7-33		135-14401	线头剪辅助齿轮	THREAD TRIMMING AUXILIARY CAM	1	
7-34		RC-0740816-K0	卡簧	RETAINING RING	1	
7-35		135-14807	连接板B	CONNECTING PLATE B	1	
7-36		SD-0790802-TP	合叶螺丝D=7.94 H=8	HINGE SCREW D=7.94 H=8	1	
7-37		135-15606	弹簧	SPRING	1	
7-38		B1649-161-000	拉伸弹簧调节螺丝	TENSION SPRING SADJUSTING SCREW	1	
7-39		NS-6110420-SP	螺母11"/64-40	NUT 11/64-40	1	
7-40		SS-7110910-TP	螺钉11"/64-40 L=8.5	SCREW 11/64-40 L=8.5	1	
7-41		WP-048056-SP	垫圈4.8x8.4x0.8	WASHER 4.8x8.4x0.8	2	
7-42		135-14708	连接板A	CONNECTING PLATE A	2	
					1	

# 8. 踏板减压单元结构 / PEDAL PRESSURE DECREASING UNIT COMPONENTS

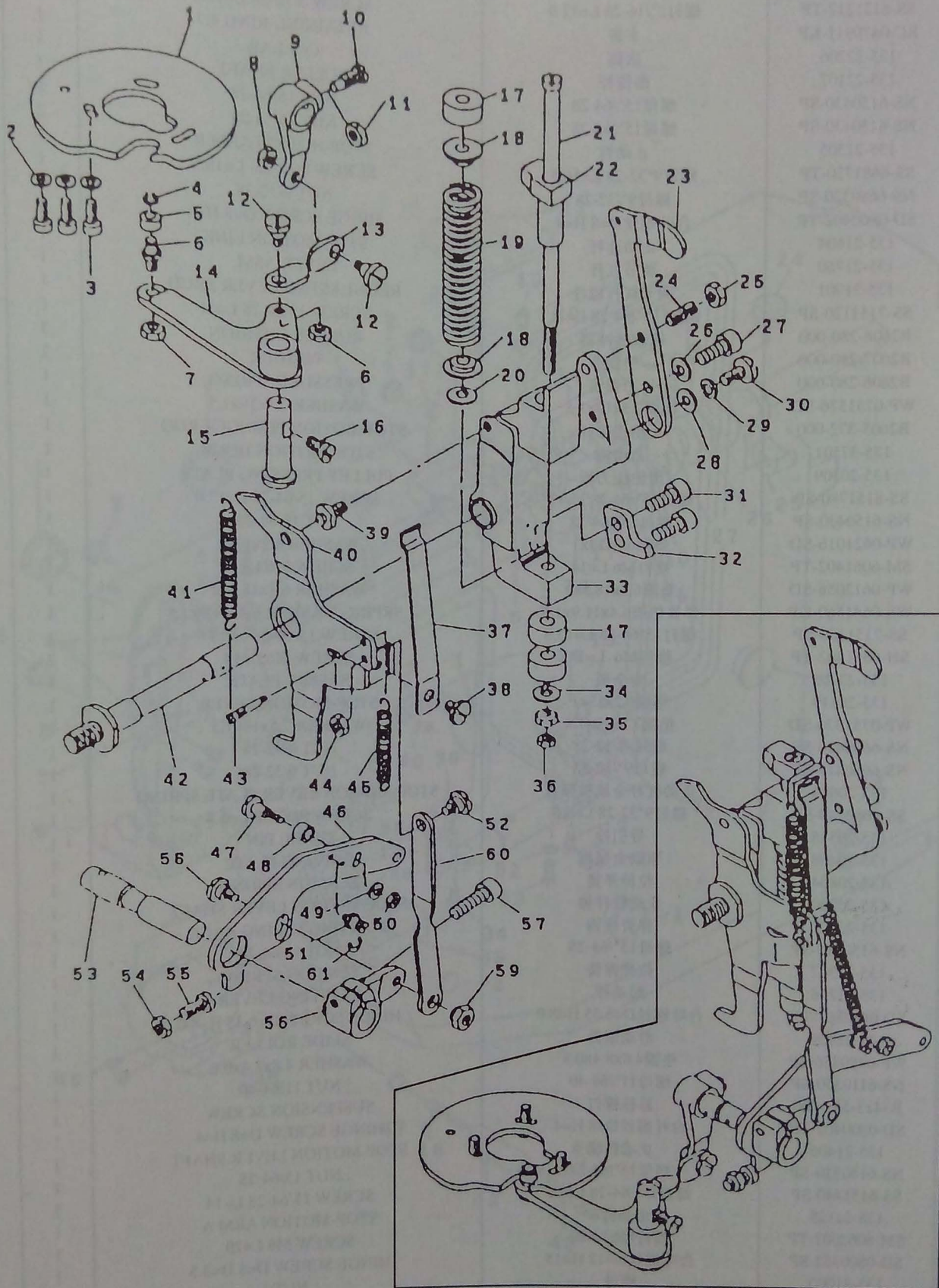


# 8. 踏板减压单元结构 / PEDAL PRESSURE DECREASING UNIT COMPONENTS

序号 Ref.no	注解 Note	零件图号 Part.no	中文名称	English Description	数量 Qty	备注 Remark
8-1		135-23188	减压装置	PRESSURE DECREASING DEVICE	1	
8-2		135-24608	减压杆	PRESSURE DECREASING LEVER	(2)	
8-3		135-25100	柱螺栓	STUD	(2)	
8-4		135-24707	连杆插销A	LEVER LATCH A	(1)	
8-5		SS-2110920-TP	螺钉11"/64-40 L=8.5	SCREW 11/64-40 L=8.5	(2)	
8-6		SS-7110910-TP	螺钉11"/64-40 L=8.5	SCREW 11/64-40 L=8.5	(2)	
8-7		SD-0640321-SP	合叶螺丝D=6.35 L=3.2	HINGE SCREW D=6.35 H=3.2	(1)	
8-8		135-24806	连杆插销B	LEVER LATCH B	(1)	
8-9		135-25001	弹簧	SPRING	(1)	
8-10		135-24905	减压杆连接装置	PRESSURE DECREASING LEVER LINK	(1)	
8-11		B1110-280-000	弹簧悬挂钩	THREAD CUTTING LINK SPRING RAC	(2)	
8-12		SS-8150710-SP	螺钉15"/64-28 L=7	SCREW 15/64-28 L=7	(1)	
8-13		MAT-80116S00	悬挂钩	SUSPENSION PIN	(1)	
8-14		135-25605	辅助凸轮	AUXILIARY CAN	(1)	
8-15		SD-0720331-SP	合叶螺丝D=7.24 L=3.3	HINGE SCREW D=7.24 H=3.3	(1)	
8-16		SS-6110710-TP	螺钉11"/64-40 L=6.5	SCREW 11/64-40 L=6.5	(1)	
8-17		135-25704	弹簧	SPRING	(1)	
8-18		SM-6061002-TP	螺钉M6 L=10	SCREW M6 L=10	(2)	
8-19		135-23352	减压轴	PRESSURE DECREASING SHAFT ASM.	(1)	
8-20		PS-0300162-KH	开口销3x16	SPRING PIN 3x16	(1)	
8-21		135-23121	减压单元结构	PRESSURE DECREASING UNIT FRAME	(1)	
8-22		135-24368	防旋转插销	ROTATION PREVENTING LATCH ASM.	(1)	
8-23		135-24418	弹簧	SPRING	(1)	
8-24		SD-0600321-SP	合叶螺丝D=6 H=3.2	HINGE SCREW D=6 H=3.2	(1)	
8-25		SS-8620610-SP	螺钉3"/16-32 L=6	SCREW 3/16-32 L=6	(1)	
8-26		135-24227	减压离合器	DECREASING CLUTCH ASM.	(1)	
8-27		135-23808	离合器弹簧	CLUTCH SPRING	(1)	
8-28		SM-6051202-TP	螺钉M6x0.8 L=12	SCREW M5x0.8 L=12	(1)	
8-29		135-24129	内环管和内套	INNER SLEEVE	(1)	
8-30		135-24004	外套	OUTER SLEEVE	(1)	
8-31		135-23915	外导套	OUTER SLEEV GUIDE	(1)	
8-32		RC-1850001-KP	卡簧	SNAP RING 18.5	(1)	
8-33		SB-1200003-00	轴承D=20x42	BEARING D=20x42	(1)	
8-34		135-23428	轴	SHAFT	(1)	
8-35		SB-3120001-00	轴承D=12x15	BEARING D=12x15	(1)	
8-36		135-23519	轴环A	COLLAR A	(2)	
8-37		135-23600	轴环B	COLLAR B	(1)	
8-38		135-25308	外套	IDLER PULLEY INSRALLING PLATE	(1)	
8-39		SS-6110810-TP	螺钉11"/64-40 L=8	SCREW 11/64-40 L=8	(3)	
8-40		135-25407	螺钉	SCREW	(1)	
8-41		SS-8150822-TP	螺钉15"/64-28 L=8	SCREW 15/64-28 L=8	(2)	
8-42		135-23212	驱动滑轮	DRIVING PULLEY	(1)	
8-43		SS-8151550-SP	螺钉15"/64-28 L=15	SCREW 15/64-28 L=15	(1)	
8-44		WP-0482088-SD	垫圈4.8x11.5x2	WASHER 4.8x11.5x2	(2)	
8-45		SS-8620850-SP	螺钉3"/16-32 L=8.0	SCREW 3/16-32 L=8.0	(1)	
8-46		SM-6062002-TP	螺钉M6 L=20	SCREW M6 L=20	3	
8-47		WP-0621016-SD	垫圈套6.2x13x1	WASHER 6.2x13x1	3	
8-48		135-32254	惰性滑轮系统	IDLER PULLEY ASM.	1	
8-49		135-32106	惰性滑轮架	INDLER PULLEY BRACKET	(1)	
8-50		WP-0621016-SD	垫圈6.2x13x1	WASHER 6.2x13x1	(1)	
8-51		SS-6150760-SN	螺钉15"/64-28 L=6.5	SCREW 15/64-28 L=6.5	(1)	
8-52		NS-6150310-SP	螺母15"/64-28	NUT 15/64-28	(1)	
8-53		WP-0612056-SD	垫圈6.1x18.5x2	WASHER 6.1x18.5x2	(1)	
8-54		B7810-980-000	拉伸环	TENSION RING	(1)	
8-55		135-32262	惰轮滑轮	IDLER PULLEY ASM.	(1)	
8-56		SD-1201501-SP	合叶螺丝D=12 H=15	HINGE SCREW D=12 H=15	(1)	



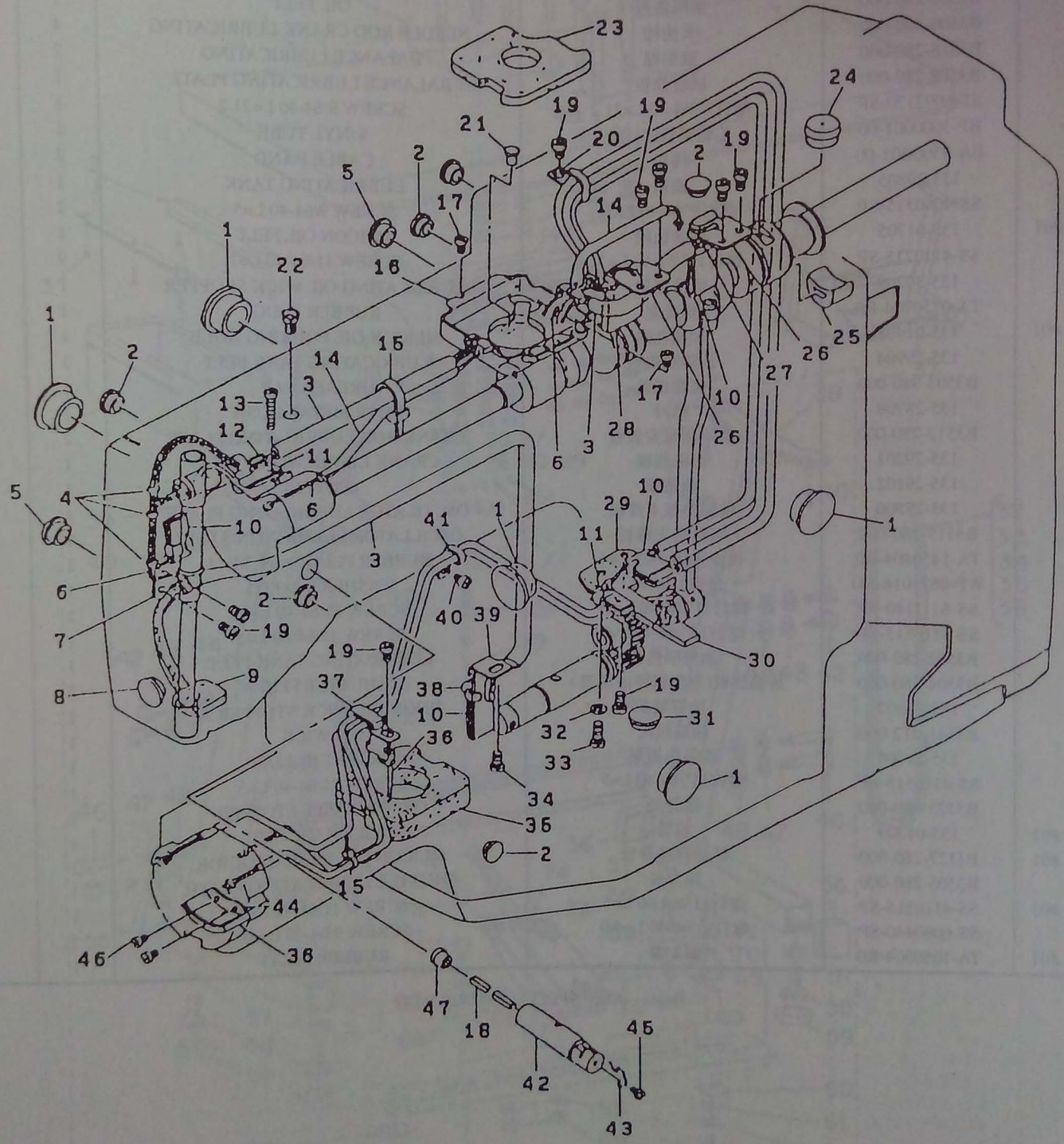
9. 止动机械装置结构 / STOP-MOTION MECHANISM COMPONENTS



# 9. 止动机械装置结构 / STOP-MOTION MECHANISM COMPONENTS

序号 Ref.no	注解 Note	零件图号 Part.no	中文名称	English Description	数量 Qty	备注 Remark
9-1		135-22008	止动调节凸轮	STOP-HOTION REGULATING GAM.	1	
9-2		WP-0480856-SP	垫圈4.8x8.4x0.8	WASHER 4.8x8.4x0.8	3	
9-3		SS-6121212-TP	螺钉3"/16-28 L=12.0	SCREW 3/16-28 L=12.0	3	
9-4		RC-0470911-KP	卡簧	RETAINING RING 4.7	1	
9-5		135-22206	滚筒	COLLAR	1	
9-6		135-22107	滚筒杆	ROLLER SHAFT	1	
9-7		NS-6150430-SP	螺母15"/64-28	NUT 15/64-28	1	
9-8		NS-6150430-SP	螺母15"/64-28	NUT 15/64-28	2	
9-9		135-21505	止动臂	STOP-HOTION ARM B	1	
9-10		SS-6681720-TP	螺钉9"/32-28 L=16.5	SCREW 9/32-28 L=16.5	1	
9-11		NS-6680320-SP	螺母9"/32-28	NUT 9/32-28	1	
9-12		SD-0800402-TP	合叶螺丝D=8 H=4	HINGE SCREW D=8 H=4	2	
9-13		135-21604	止动连杆	STOP MOTION LINK	1	
9-14		135-21760	调节杠杆	LEVER ASM.	1	
9-15		135-21901	调节杠杆螺栓	REGULASTNG LEVER SRUD	1	
9-16		SS-7151120-SP	螺钉15"/64-28 L=11	SCREW 15/64-28 L=11	1	
9-17		B2608-280-000	橡胶缓冲器	RUBBER CUSHION	3	
9-18		B2607-280-000	垫圈	WASHER	2	
9-19		B2606-280-000	压力弹簧	PRESSURE SPRING	1	
9-20		WP-0751576-SD	垫圈7.5x19x1.5	WASHER 7.5x19x1.5	1	
9-21		B2605-372-000	止动连接杆	STOP MOTION PLUNGER ROD	1	
9-22		135-37501	止动钩	STOP-MOTION HOOK	1	
9-23		135-20309	滑轮压力板	PULLEY PRESSING PLATE	1	
9-24		SS-8151780-SP	螺钉15"/64-28 L=17	SCREW 15/64-28 L=17.0	1	
9-25		NS-6150430-SP	螺母15"/64-28	NUT 15/64-28	1	
9-26		WP-0621016-SD	垫圈6.2x13x1	WASHER 6.2x13x1	1	
9-27		SM-6061402-TP	螺钉M6 L=14	SCREW M6 L=14	1	
9-28		WP-0612056-SD	垫圈6.1x18.5x2	WASHER 6.1x18.5x2	1	
9-29		WS-0641560-KP	弹簧垫圈6.4x11.9x1.5	SRPING WASHER 6.4x11.9x1.5	1	
9-30		SS-7151330-SP	螺钉15"/64-28 L=13.5	SCREW 15/64-28 L=13.0	1	
9-31		SH-6061402-TP	螺钉M6 L=14	SCREW M6 L=14	1	
9-32		135-20705	安全板	SAFERY PLATE	2	
9-33		135-20119	垫圈6.2x13x1	STOP-MOTION LEVER	1	
9-34		WP-0751576-SD	垫圈7.5x19x1.5	WASHER 7.5x19x1.5	1	
9-35		NS-6680410-SP	螺母9"/32-28	NUT 9/32-28	1	
9-36		NS-6680410-SP	螺母9"/32-28	NUT 9/32-28	1	
9-37		135-20606	止动杠杆金属板弹簧	STOP-MOTION LEVER PLATE SPRING	1	
9-38		SS-5680740-SP	螺钉9"/32-28 L=6.8	SCREW 9/32-28 L=6.8	1	
9-39		135-20515	导引栓	GUIDE PIN	1	
9-40		135-20408	驱动金属板	DRIVING PLATE	1	
9-41		135-20804	拉伸弹簧	TENSION SPRING	1	
9-42		135-20200	止动杠杆轴	STOP-MOTION LEVER SHAFT	1	
9-43		135-22305	弹簧挂钩	STARTING SPRING RACK	1	
9-44		NS-6150310-SP	螺母15"/64-28	NUT 15/64-28	1	
9-45		135-21307	拉伸弹簧	TENSION SPRING	1	
9-46		135-21216	起动机	STARTING LEVER	1	
9-47		SD-0640801-TP	合叶螺丝D=6.35 H=8.0	HINGE SCREW D=6.35 H=8.0	1	
9-48		135-22909	滑动滚筒	SLIDE ROLLER	1	
9-49		WP-0480856-SP	垫圈4.8x8.4x0.8	WASHER 4.8x8.4x0.8	1	
9-50		NS-6110350-SP	螺母11"/64-40	NUT 11/64-40	1	
9-51		B3413-552-000	悬挂螺钉	SUSPENSION SCREW	1	
9-52		SD-0800402-TP	合叶螺丝D=8 H=4	HINGE SCREW D=8 H=4	1	
9-53		135-21406	止动臂轴	STOP-MOTION LEVER SHAFT	1	
9-54		NS-6150310-SP	螺母15"/64-28	NUT 15/64-28	1	
9-55		SS-6151440-SP	螺钉15"/64-28 L=14	SCREW 15/64-28 L=14	1	
9-56		135-21125	止动臂A	STOP-MOTION ARM A	1	
9-57		SM-6062002-TP	螺钉M6 L=20	SCREW M6 L=20	1	
9-58		SD-0800352-SP	合叶螺丝D=12 H=15	HINGE SCREW D=8 H=3.5	1	
9-59		135-21000	螺母	NUT	1	
9-60		135-20903	止动连接杆	STOP-MOTION CONNECTING LEVER	1	
9-61		RE-0400000-K0	E形挡圈4	E-RING 4	1	

# 10. 润滑油机械装置结构 / LUBRICATION MECHANISM COMPONENTS

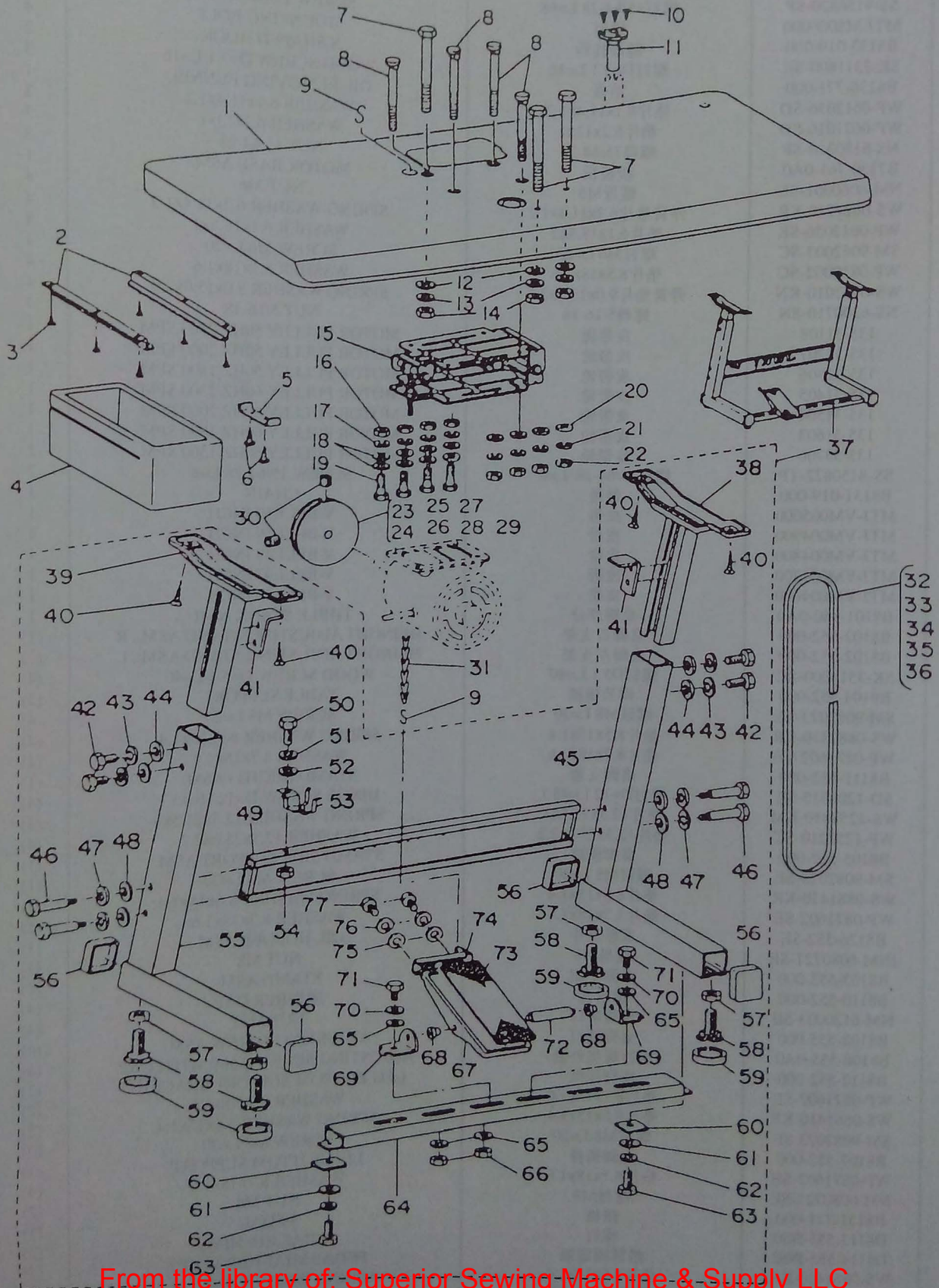


# 10. 润滑油机械装置结构 / LUBRICATION MECHANISM COMPONENTS

序号 Ref.no	注解 Note	零件图号 Part.no	中文名称	English Description	数量 Qty	备注 Remark
10-1		TA-2100904-R0	橡皮塞	RUBBER PLUG	5	
10-2		TA-1050504-R0	橡皮塞	RUBBER PLUG	6	
10-3		BP-6000000-00	乙烯基管(白色)	VINYL PIPE	1	
10-4		B1419-026-000	吸油绳架	OIL WICK PRESSER	3	
10-5		TA-1250406-R0	橡皮塞D=12.5 L=4	RUBBER PLUG D=12.5 L=4	2	
10-6		CQ-2522000-00	吸油绳	OIL WICK	1	
10-7		B3506-280-000	吸油绳架	OIL WICK PRESSER	1	
10-8		TA-1250406-R0	橡皮塞D=12.5 L=4	RUBBER PLUG D=12.5 L=4	1	
10-9		B3507-280-000	油隔热板	OIL FELT	1	
10-10		B3500-280-000	吸油棉	NEEDLE ROD CRANK LUBRICATING	4	
10-11		B3518-280-000	吸油棉	BALANCE LUBRICATING	2	
10-12		B3508-280-000	润滑油板	BALANCE LUBRICATING PLATE	1	
10-13		SS-6092120-SP	螺钉9"/64-40 L=21.2	SCREW 9/64-40 L=21.2	1	
10-14		BP-3000001-00	乙烯基管(白色)	VINYL TUBE	1	
10-15		EA-9500B01-00	线扣	CABLE BAND	2	
10-16		135-29805	油箱	LUBRICATING TANK	1	
10-17		SS-4090515-SP	螺钉9"/64-40 L=5	SCREW 9/64-40 L=5	2	
10-18	#01	135-01705	硅油毡圈	SILICON OIL FELT	1	
10-19		SS-4110715-SP	螺钉11"/64-40 L=7	SCREW 11/64-40 L=7	9	
10-20		135-30209	吸油绳架	LUBRICATING OIL WICK SROPPER	1	
10-21		TA-0750704-R0	橡皮塞	RUBBER PLUG	1	
10-22	#01	135-01408	加油孔嘴	SILICON OIL POURING HOLE	1	
10-23		135-29904	油箱隔热板	LUBRICATING TANK FELT	1	
10-24		B3503-980-000	滑指顶盖	GREASE CAP	1	
10-25		135-28708	轴衬	REAR METAL BUSH	1	
10-26		B3512-280-000	油隔热板安装板	CRANK ROK LUBRICATING PLATE	2	
10-27		135-29201	油隔热板	CRANK LUBRICATING FELT	1	
10-28		135-29102	油毡圈	OIL FELT	1	
10-29		135-28500	油隔热板支撑板	OSCTILATOR LUBRICATING PLATE	1	
10-30		B3515-280-000	吸油绳支撑板	OSCILLATOR LUBRICATING FELT	1	
10-31		TA-1450404-R0	橡皮塞D=14.5 L=4	RUBBER PLUG D=14.5 L=4	1	
10-32		WP-0621016-SD	垫圈6.2x13x1	WASHER 6.2x13x1	1	
10-33		SS-6111140-SP	螺钉11"/64-40 L=11	SCREW 11/64-40 L=11	1	
10-34		SS-4110515-SP	螺钉15"/64-40 L=5	SCREW 11/64-40 L=5	1	
10-35		B3502-280-000	油箱隔热板	LUBRICATING TANK FELT	1	
10-36		B3504-280-000	油箱热板(为滑板环面设置)	SHUTTLE FELT	1	
10-37		135-28807	油管架A	HOOK OIL WICK STOPPER A	2	
10-38		B3541-012-000	油隔热板	OIL WICK	1	
10-39		135-29706	油隔热板架	OIL FELT HOLDER	1	
10-40		SS-4110515-SP	螺钉11"/64-40 L=5	SCREW 11/64-40 L=5	1	
10-41		B3523-980-000	油管架	OIL WICK PIPE STOPPER	1	
10-42	#01	135-01309	油管	SILICON OIL PIPE	1	
10-43	#01	B1127-280-000	硅油螺纹导管	SILICON OIL THREAD GUIDE	1	
10-44		B3505-280-000	压力板	SHUTTLE LUBRICATING PLATE	1	
10-45	#01	SS-4110515-SP	螺钉11"/64-40 L=5	SCREW 11/64-40 L=5	1	
10-46		SS-6090440-SP	螺钉9"/64-40 L=4.0	SCREW 9/64-40 L=4.0	1	
10-47	#01	TA-1050504-R0	橡皮塞	RUBBER PLUG	2	
					1	

Note #01.....SPECIAL ORDER PART

# 11. 平面结构图 / TABLE COMPONENTS



# 11. 平面结构图 / TABLE COMPONENTS

序号 Ref.no	注解 Note	零件图号 Part.no	中文名称	English Description	数量 Qty	备注 Remark
				TABLE	1	
				DRAWER SUPPORT	2	
11-1		135-34102	台板			
11-2		B8204-012-000	抽屉支架	WOOD SCREW D=3.1 L=16	6	
11-3		SK-3311600-SC	螺钉D=3.1 L=16	DRAWER	1	
11-4		D8203-555-B00	抽屉	DRAWER SUPPORT	1	
11-5		B8205-012-000	抽屉支架	WOOD SCREW D=4.8 L=25	2	
11-6		SK-3482500-SC	螺钉D=4.8 L=25	SCREW 15/64-28 L=68	3	
11-7		SS-9156830-SP	螺钉15/64-28 L=68	MOUNTING BOLT	4	
11-8		MTJ-MS000000	螺钉	S SHAPED HOOK	2	
11-9		B8133-019-000	链条挂钩	WOOD SCREW D=3.1 L=16	3	
11-10		SK-3311600-SE	螺钉D=3.1 L=16	OIL REMOVING FUNNEL	1	
11-11		B8236-771-000	油壶	WASHER 6.1x11.4x1.2	3	
11-12		WP-0612056-SD	垫片6.1x11.4x1.2	WASHER 6.2x13x1	3	
11-13		WP-0621016-SD	垫片6.2x13x1	NUT 15/64-28	3	
11-14		NS-6150310-SP	螺母15/64-28	MOTOR BASE ASM.	1	
11-15		B7130-761-0A0	按装板	NUT M6	4	
11-16		NM-6060001-SE	螺母M6	SPRING WASHER 6.2x11.4x1.2	4	
11-17		WS-0621210-KR	弹簧垫片6.2x11.4x1.2	WASHER 6.1x18.5x2	8	
11-18		WP-0612056-SE	垫片6.1x18.5x2	SCREW M6 L=20	4	
11-19		SM-9062003-SC	螺钉M6 L=20	WASHER 8.5x18x1.6	4	
11-20		WP-0850002-SC	垫片8.5x18x1.6	SPRING WASHER 9.0x15.0x2.0	4	
11-21		WS-0902010-KN	弹簧垫片9.0x15.0x2.0	NUT 5/16-18	4	
11-22		NS-6200710-SN	螺母5/16-18	MOTOR PULLEY 50HZ 2300 SPM	1	
11-23		135-31108	皮带轮	MOTOR PULLEY 50HZ 2000 SPM	1	
11-24		135-31207	皮带轮	MOTOR PULLEY 50HZ 1800 SPM	1	
11-25		135-32306	皮带轮	MOTOR PULLEY 60HZ 2300 SPM	1	
11-26		135-31405	皮带轮	MOTOR PULLEY 60HZ 2000 SPM	1	
11-27		135-31504	皮带轮	MOTOR PULLEY 60HZ 1800 SPM	1	
11-28		135-31603	皮带轮	MOTOR PULLEY 60HZ 1500 SPM	1	
11-29		135-53706	皮带轮	SCREW 15/64-28 L=8	2	
11-30		SS-8150822-TP	螺钉15/64-28 L=8	CHAIN	1	
11-31		B8131-019-000	链条	V-BELT,50 INCH	1	
11-32		MTJ-VM005000	皮带	V-BELT,49 INCH	1	
11-33		MTJ-VM004900	皮带	V-BELT,48 INCH	1	
11-34		MTJ-VM004800	皮带	V-BELT,47 INCH	1	
11-35		MTJ-VM004700	皮带	V-BELT,46 INCH	1	
11-36		MTJ-VM004600	皮带	THBLE STANK ASM.	1	
11-37		B8101-980-0A0	桌脚部分	HEINGHT ADJUSTING STAND ASM., R	(1)	
11-38		B8102-552-000	桌脚右支架	HEINGHT ADJUSTING STAND ASM., L	(1)	
11-39		B8102-552-000	桌脚左支架	WOOD SCREW D=5.1 L=40	(4)	
11-40		SK-3514000-SC	螺钉D5.1 L=40	TABLE SUPPORT	(2)	
11-41		B8104-552-000	调节压板	SCREW M8 L=20	(4)	
11-42		SM-9082023-SE	螺丝M8 L=20	SPRING WASHER 8.6x15x1.4	(4)	
11-43		WS-0881410-KR	垫片8.5x15x1.4	WASHER 8.7x18x1.6	(4)	
11-44		WP-0871602-SE	垫片8.7x18x1.6	STAMD (RIGHT) ASM.	(1)	
11-45		B8111-552-000	桌脚支架	HINGE SCREW D=12 H=43.1	(4)	
11-46		SD-1204315-SE	螺钉D=12 L=43.1	SPRING WASHER 12.5x21.5x3	(4)	
11-47		WS-1253010-KM	垫片12.5x21.5x3	WASHER 12.5x25.6x2.2	(4)	
11-48		WP-1252210-SC	垫片12.5x25.6x2.2	STAMD SIDE SUPPORT ASM.	(1)	
11-49		B8105-552-000	桌脚横撑	SCREW M8 L=20	(1)	
11-50		SM-9082023-SE	螺钉M8 L=20	SPRING WASHER 8.6x15x1.4	(1)	
11-51		WS-0881410-KR	垫片8.6x15x1.4	WASHER 8.7x18x1.6	(1)	
11-52		WP-0871602-SE	垫片8.7x18x1.6	OIL HOLDER ASM.	(1)	
11-53		B8126-552-SE	瓜形垫片	NUT M8	(1)	
11-54		JNM-6080721-SE	螺母M8	STAMD ASM.	(1)	
11-55		B8103-552-000	桌脚支架	RUBBER CAP	(4)	
11-56		B8110-552-000	橡皮套	NUT M12	(4)	
11-57		NM-6120003-SE	螺母M12	ADJUSTING SCREW ASM.	(4)	
11-58		B8108-555-000	桌脚螺钉	ADJUSTING SCREW ASM. WITH CAP	(4)	
11-59		B8108-555-0A0	螺钉橡皮外套	LEG BOTTOM SUPPORT BRACKET	(2)	
11-60		B8112-552-000	底脚压板	WASHER 8.7x18x1.6	(2)	
11-61		WP-0871602-SE	垫片8.7x18x1.6	SPRING WASHER 8.6x15x1.4	(2)	
11-62		WS-0861410-KP	垫片8.6x15x1.4	SCREW M8 L=20	(2)	
11-63		SM-9082023-SE	螺钉M8 L=20	LEG BOTTOM SUPPORT	(1)	
11-64		B8107-552-000	底脚横撑	WASHER 8.7x18x1.6	(4)	
11-65		WP-0871602-SE	垫片8.7x18x1.6	NUT M8	(2)	
11-66		NM-6080721-SE	螺母M8	PEDAL	(1)	
11-67		B8151-771-000	踏板	PEDAL BUSHING	(2)	
11-68		D8113-555-B00	螺钉	PEDAL SHAFT BRACKET	(2)	
11-69		D8114-555-B0E	踏板固定板	APRING WASHER 8.6x15x1.4	(2)	
11-70		WS-0861410-KR	垫片8.6x15x1.4	SCREW M8 L=20	(2)	
11-71		SM-9082023-SE	螺钉M8 L=20	PEDAL CONNECTING ROD	(1)	
11-72		B8153-771-000	踏板销子	PEDAL MAT	(1)	
11-73		B8152-771-000	踏板橡皮	PEDAL SADJUSTING PLATE	(1)	
11-74		B8125-280-000	踏板连接板	WASHER 6.7x13x1	(1)	
11-75		WP-0671016-SE	垫片6.7x13x1	SPRING WASHER 6.2x11.4x1.2	(2)	
11-76		WS-0621210-KR	垫片6.2x11.4x1.2	SCREW M6 L=12	(2)	
11-77		SM-90621203-SE	螺钉M6 L=20		(2)	